

Campmeadows Primary School (4833)

2007 School Level Report

Please check the data in this report. If, after comparing it with your own records, you deem it to be incorrect or incomplete, follow the directions on the web page below:

- <http://www.sofweb.vic.edu.au/standards>, then click on '**Accountability and Improvement**', then click on '**School Performance Reports**'.
-
-

Contents

	Page No.
Privacy	3
SFO Density and LBOTE	4
Assessment of Reading Prep to Year 2	5-6
Teacher Judgments against the VELs	7-15
AIM Reading	16
AIM Number	17
Teacher Assessment of Student Progress (PSD students)	18-19
Enrolments	20
Student Absence	21
Parent Opinion	22-23
Staff Opinion	24
Staff Sick Leave	25
Teaching Staff Retention	26
Bank Balances	27

Privacy

When reporting on the school's performance to the school community, care must be taken to avoid the disclosure of information that can directly or indirectly identify an individual. This may be a particular issue when reporting on the achievement of specific cohorts of students or the opinions of staff where there are small numbers.

In situations where confidentiality cannot be assured, schools may wish to report on the mean result or provide a written comment on school, year level or cohort performance.

Where the School Level Report is provided to school council members as part of any annual reporting process, or used for discussion on a school's performance, such as in consultation with the school community in the school self-evaluation process, it is important to remind school community members of their duty to only use this information for the purpose it was provided, and that the material must be kept confidential.

It is important to note that information that identifies an individual or can be used with other readily available information to identify a person is now protected by the *Information Privacy Act 2000* (<http://www.education.vic.gov.au/about/deptpolicies/informationprivacy.htm>).

SFO Density and LBOTE

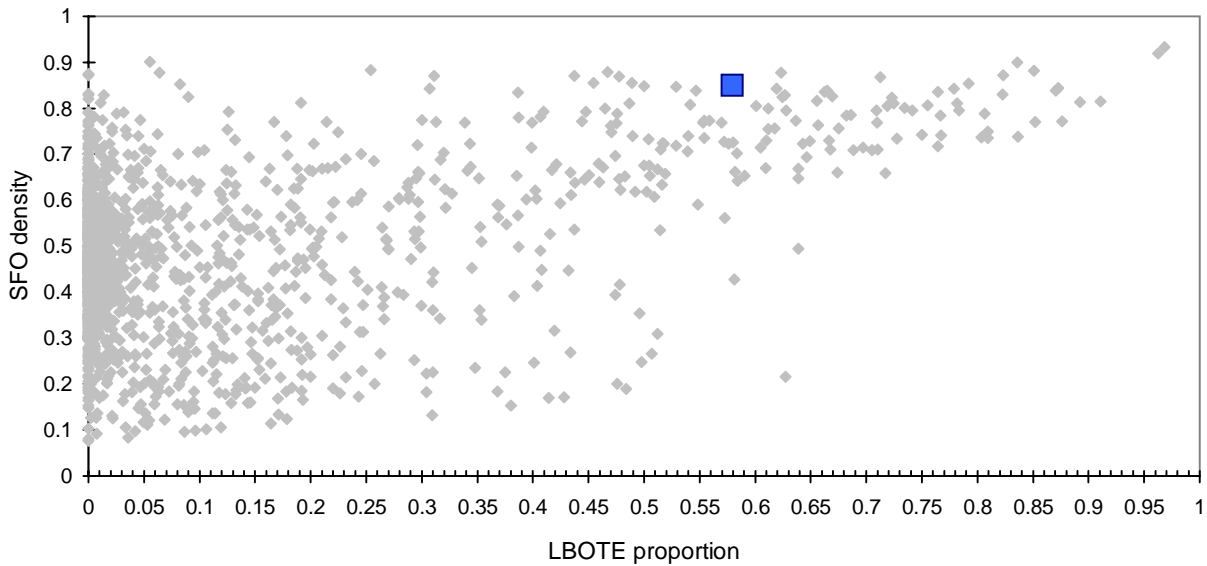
School no: 4833

School name: Campmeadows Primary School

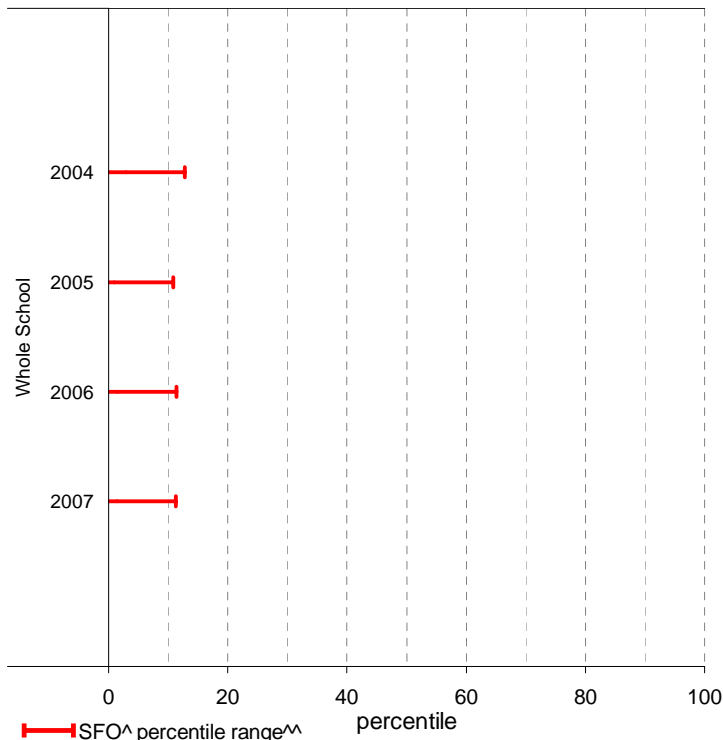
Explanation: The chart below plots the school's 2007 SFO (Student Family Occupation) density[^] and LBOTE (Language Background Other Than English) proportion* against that of all government schools. This school is highlighted as a square on the chart.

	2000	2001	2002	2003	2004	2005	2006	2007
SFO density [^] :					0.85	0.87	0.84	0.85
LBOTE proportion*:	0.40	0.44	0.44	0.42	0.44	0.49	0.60	0.58

School's 2007 SFO density and LBOTE proportion against that of all government schools



School's SFO[^] percentile range^{^^} over time



Notes: [^] The higher the SFO density, the lower the SFO percentile, the lower the socio-economic status (SES).
^{^^} The school's SFO percentile range shows the 20% of schools with an SFO Density most like this school.
* From 2007, a student is LBOTE if either the student or one parent/guardian speaks a language other than English at home. Prior to 2007, a student is LBOTE if the student or one of the parents was born in a non-English speaking country.

Assessment of Reading: Prep to Year 2

School no: 4833

School name: Campmeadows Primary School

Explanation: Students' ability to read unsighted text is assessed at the end of each year. The data presented here includes 'deemed not capable' students.

More detailed information (including data where deemed not capable students are excluded) is available in the Assessment of Reading report, available from the School Performance Reports website.

Source of data: Data transmitted from school to DEECD via an online web-form.

	Prep										Year 1										Year 2												
	School									State	School									State	School									State			
	2003		2004		2005		2006		2007		2007	2003		2004		2005		2006		2007		2007	2003		2004		2005		2006		2007		2007
	(No.)	%	(No.)	%	(No.)	%	(No.)	%	(No.)	%	%	(No.)	%	(No.)	%	(No.)	%	(No.)	%	(No.)	%	%	(No.)	%	(No.)	%	(No.)	%	(No.)	%	%		
Level 1																																	
100%	(14)	77.8	(14)	66.7	(16)	84.2	(11)	68.8	(14)	70.0	68.1	(20)	95.2	(20)	90.9	(19)	100.0	(21)	100.0	(20)	100.0	94.9											
90-99%	(2)	11.1	(6)	28.6	(3)	15.8	(4)	25.0	(5)	25.0	26.2			(2)	9.1										(18)	100.0							
80-89%	(2)	11.1	(1)	4.8							2.5																						
51-79%					(1)	6.2					1.6	(1)	4.8																				
50% or below											1.7																						
Total	(18)	100.0	(21)	100.0	(19)	100.0	(16)	100.0	(20)	100.0	100.0	(21)	100.0	(22)	100.0	(19)	100.0	(21)	100.0	(20)	100.0	100.0			(18)	100.0							
Subtotal 90-100%	(16)	88.9	(20)	95.2	(19)	100.0	(15)	93.8	(19)	95.0	94.3	(20)	95.2	(22)	100.0	(19)	100.0	(21)	100.0	(20)	100.0	99.3			(18)	100.0							
Level 5																																	
100%	(6)	33.3	(8)	38.1	(10)	52.6	(7)	43.8	(4)	20.0	44.5	(18)	85.7	(14)	63.6	(17)	89.5	(19)	90.5	(17)	85.0	82.0	(12)	100.0	(12)	85.7	(18)	100.0	(15)	100.0	(18)	100.0	90.9
90-99%	(10)	55.6	(10)	47.6	(7)	36.8	(7)	43.8	(8)	40.0	35.9	(2)	9.5	(7)	31.8	(1)	5.3	(2)	9.5	(3)	15.0	15.9			(2)	14.3						8.6	
80-89%	(1)	5.6			(2)	10.5			(2)	10.0	5.2																					0.2	
51-79%			(1)	4.8					(2)	10.0	3.9	(1)	4.8		(1)	5.3																0.1	
50% or below	(1)	5.6	(2)	9.5			(2)	12.5	(4)	20.0	10.5			(1)	4.5																	0.3	
Total	(18)	100.0	(21)	100.0	(19)	100.0	(16)	100.0	(20)	100.0	100.0	(21)	100.0	(22)	100.0	(19)	100.0	(21)	100.0	(20)	100.0	100.0	(12)	100.0	(14)	100.0	(18)	100.0	(15)	100.0	(18)	100.0	100.0
Subtotal 90-100%	(16)	88.9	(18)	85.7	(17)	89.5	(14)	87.5	(12)	60.0	80.4	(20)	95.2	(21)	95.5	(18)	94.7	(21)	100.0	(20)	100.0	97.9	(12)	100.0	(14)	100.0	(18)	100.0	(15)	100.0	(18)	100.0	99.5
Level 15																																	
100%											37.6	(7)	33.3	(4)	18.2	(6)	31.6	(6)	28.6	(3)	15.0		(8)	66.7	(8)	57.1	(12)	66.7	(10)	66.7	(8)	44.4	64.1
90-99%											49.1	(7)	33.3	(12)	54.5	(8)	42.1	(13)	61.9	(11)	55.0		(4)	33.3	(5)	35.7	(5)	27.8	(5)	33.3	(9)	50.0	32.3
80-89%											6.1	(3)	14.3	(1)	4.5	(1)	5.3	(1)	4.8	(3)	15.0				(1)	5.6				(1)	5.6	1.8	
51-79%											2.9	(1)	4.8	(4)	18.2	(2)	10.5	(1)	4.8	(3)	15.0											0.7	
50% or below											4.3	(3)	14.3	(1)	4.5	(2)	10.5								(1)	7.1						1.1	
Total											100.0	(21)	100.0	(22)	100.0	(19)	100.0	(21)	100.0	(20)	100.0	100.0	(12)	100.0	(14)	100.0	(18)	100.0	(15)	100.0	(18)	100.0	100.0
Subtotal 90-100%											86.7	(14)	66.7	(16)	72.7	(14)	73.7	(19)	90.5	(14)	70.0	86.7	(12)	100.0	(13)	92.9	(17)	94.4	(15)	100.0	(17)	94.4	96.4
Level 20																																	
100%																							(7)	58.3	(8)	57.1	(4)	22.2	(10)	66.7	(7)	38.9	48.8
90-99%																							(5)	41.7	(5)	35.7	(13)	72.2	(5)	33.3	(9)	50.0	46.0
80-89%																									(1)	5.6				(2)	11.1	2.5	
51-79%																																0.9	
50% or below																									(1)	7.1							1.8
Total																							(12)	100.0	(14)	100.0	(18)	100.0	(15)	100.0	(18)	100.0	100.0
Subtotal 90-100%												(12)	100.0	(13)	92.9	(17)	94.4	(15)	100.0	(16)	88.9	94.8	(12)	100.0	(13)	92.9	(17)	94.4	(15)	100.0	(16)	88.9	94.8

	2003	2004	2005	2006	2007	2003	2004	2005	2006	2007	2003	2004	2005	2006	2007	
No. of students DNC ¹ :	2	1	0	1	1	1	1	1	0	0	0	1	1	1	0	0
No. of students at risk ² :	2	1	0	1	1	1	1	1	0	0	0	1	1	1	0	1

- Notes:**
- Students can be DNC (deemed not capable) only if they meet one of the conditions (insufficient English, receiving D&I funding, insufficient attendance at the school or referred from Reading Recovery) AND read below the minimum standard.
 - The number of students at risk is the number of students reading at less than 90% accuracy at Level 1 for Prep, Level 5 for Year 1 or Level 15 for Year 2.

Assessment of Reading: Prep to Year 2

School no: 4833

School name: Campmeadows Primary School

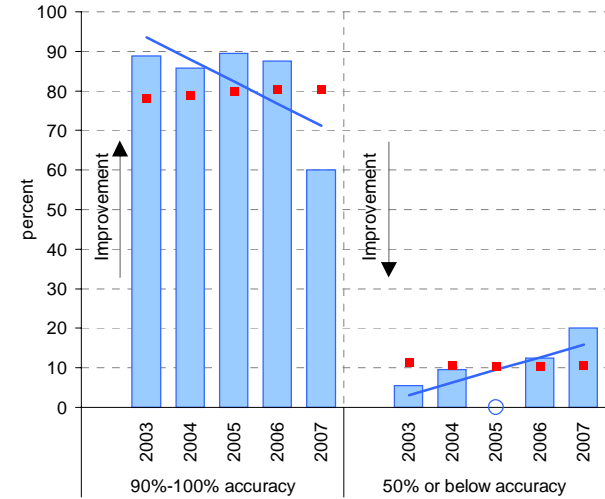
Explanation: Students' ability to read unsighted text is assessed at the end of each year.

Source of data: Data transmitted from school to DEECD via an online web-form.

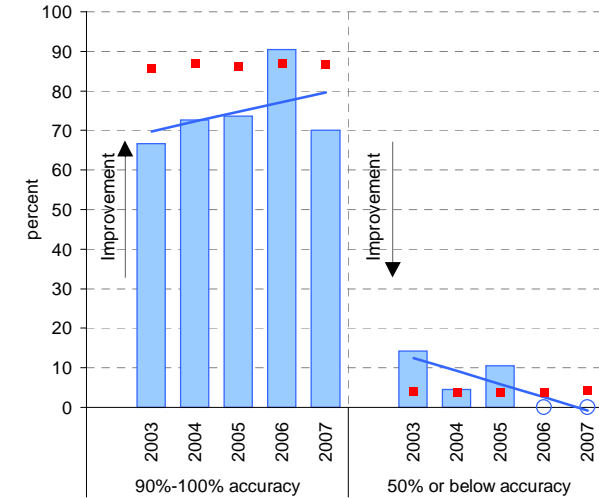
Notes: * The school trendline is being trialled. It is only plotted when there is data for each calendar year.

^ This data is highly skewed, with a lot of schools obtaining the best possible result, particularly in Year 2. The maximum achievable percentile is therefore significantly less than 100.

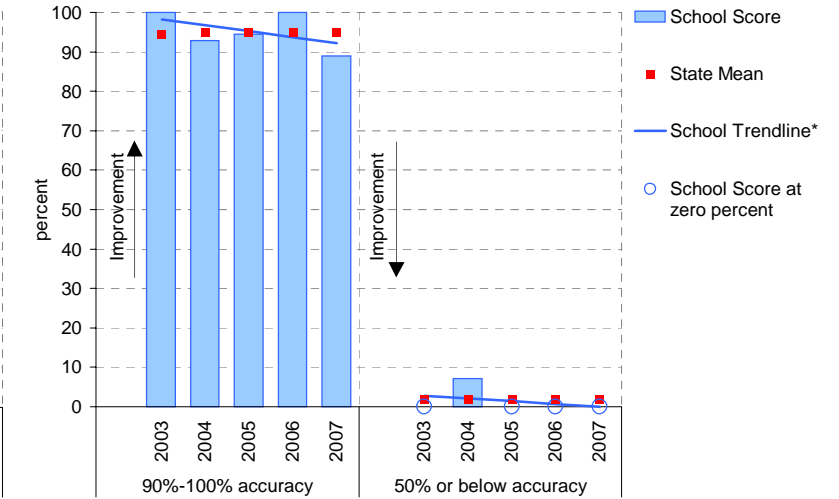
Year level: Prep
Text level: Level 5



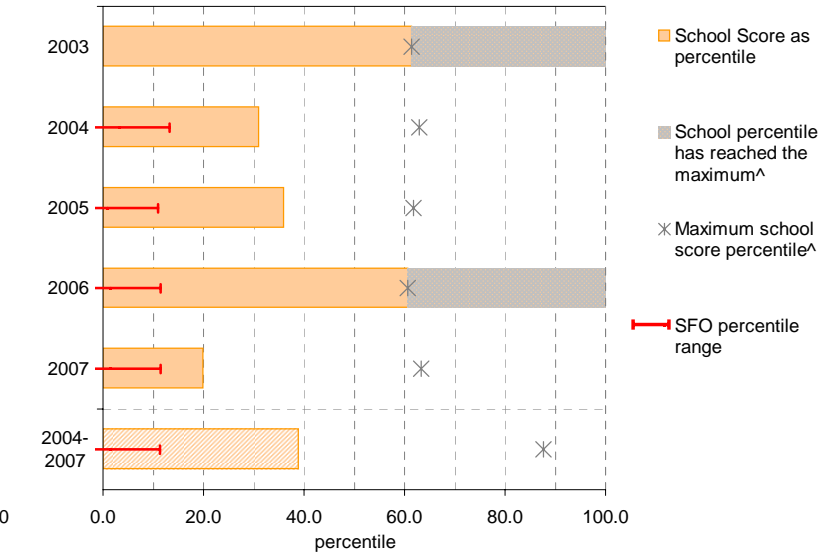
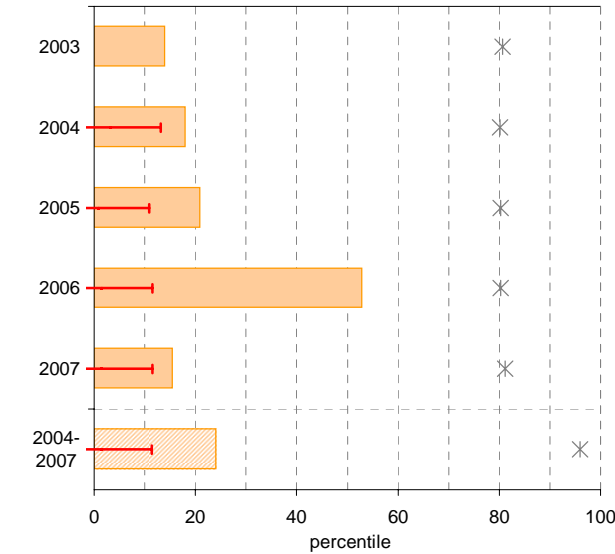
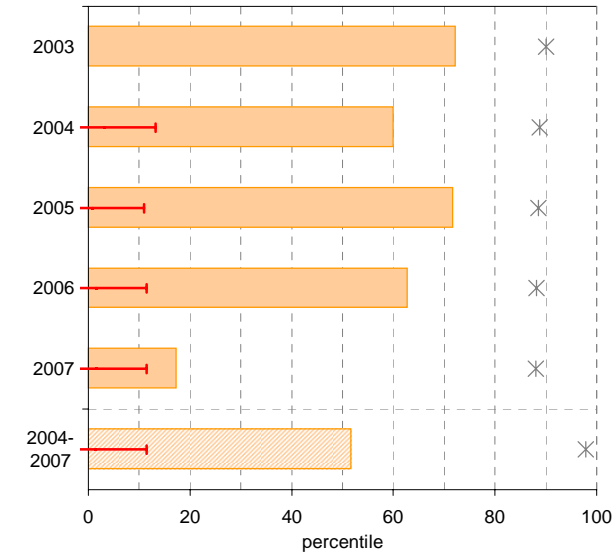
Year level: Year 1
Text level: Level 15



Year level: Year 2
Text level: Level 20



90%-100% accuracy as percentile against SFO percentile range



Teacher Judgments against the VELS - Year levels Prep-6 combined

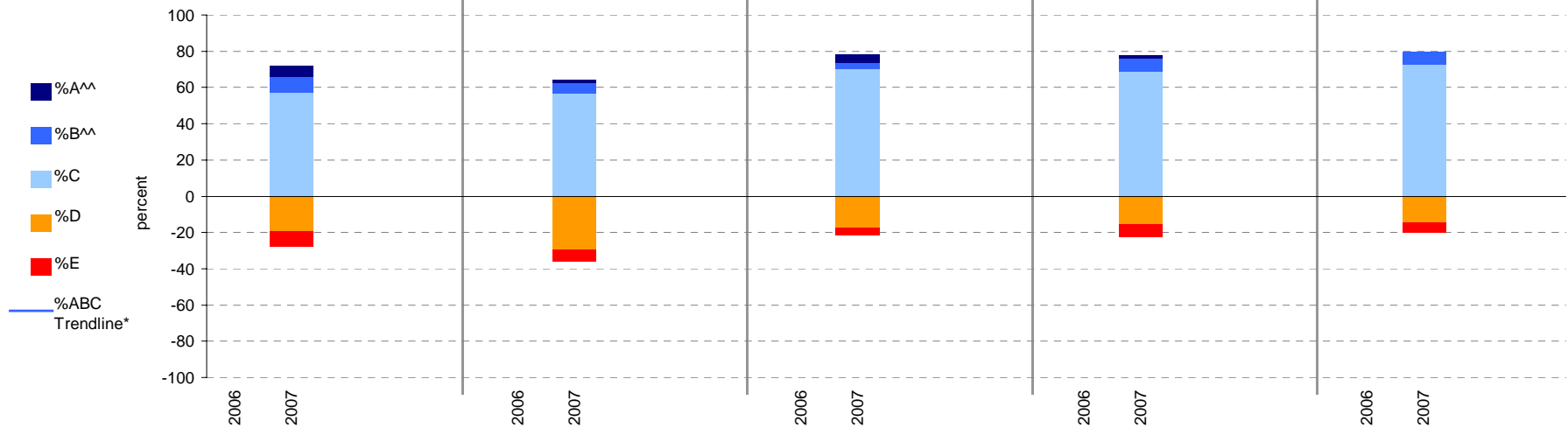
School no: 4833

School name: Campmeadows Primary School

Source of data: Data retrieved electronically from CASES21.

Explanation: Teacher judgments of student progress against the VELS.

Year Levels:	Reading						Writing					Speaking & Listening					Number					Measurement, Chance & Data									
	total students	% A^^	% B^^	% C	% D	% E	total students	% A^^	% B^^	% C	% D	% E	total students	% A^^	% B^^	% C	% D	% E	total students	% A^^	% B^^	% C	% D	% E	total students	% A^^	% B^^	% C	% D	% E	
Prep-6	2006																														
(combined)	2007	126	6	9	57	19	9	125	2	6	57	30	6	125	5	3	70	18	4	125	2	7	69	15	7	125	0	7	73	14	6



Notes: * The school trendline is being trialled. It is only plotted when there is data for each calendar year.
 ^^ The cutoff between grades A and B changed in 2007. Further information is available on the following website:
<http://www.education.vic.gov.au/studentlearning/studentreports/schools/whatsnew.htm>.

Teacher Judgments against the VELS - English (primary)

School no: 4833

School name: Campmeadows Primary School

Source of data: Data retrieved electronically from CASES21.

Explanation: Teacher judgments of student progress against the VELS.

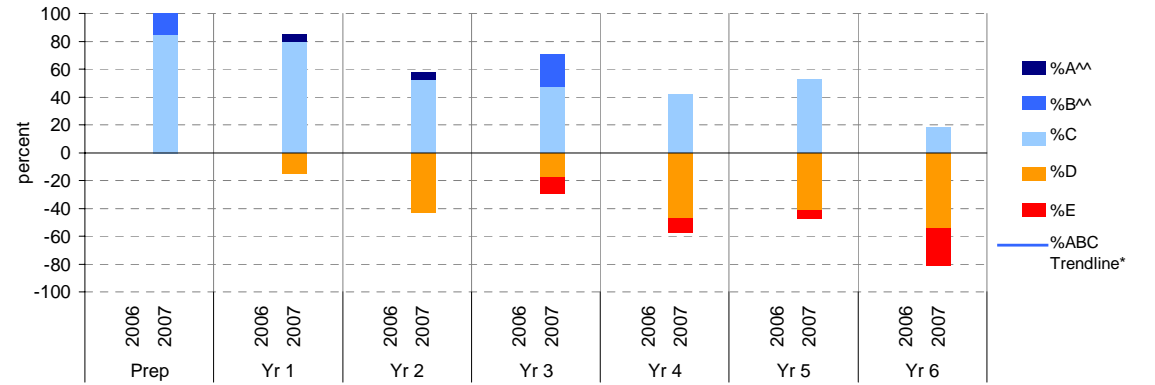
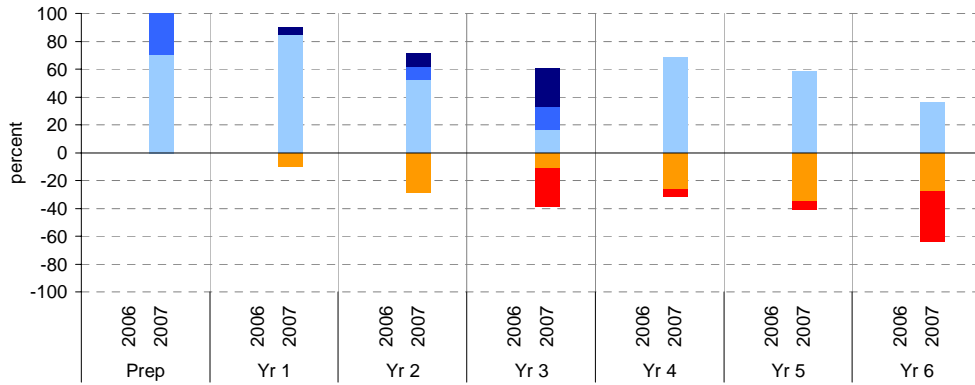
Notes: * The school trendline is being trialled. It is only plotted when there is data for each calendar year.
 ** In 2006, approx. 850 schools assessed their students against the 0.25 VELS scale. 2006 benchmarks are therefore based on a subset of schools. 2007 benchmarks will be calculated in August, when data from all schools has been submitted.
 ^ Percentiles for 2007 will be calculated in August, when data from all schools has been submitted.
 ^^ The cutoff between grades A and B changed in 2007. Further information is available on the following website:
<http://www.education.vic.gov.au/studentlearning/studentreports/schools/whatsnew.htm>.

Reading

	total students	% of students by grade					Mean Score		
		A ^{^^}	B ^{^^}	C	D	E	School	State ^{**}	
Yr 4	2006								2.96
	2007	19	0	0	68	26	5	2.67	2.89
Yr 5	2006								3.44
	2007	17	0	0	59	35	6	3.12	3.38
Yr 6	2006								3.94
	2007	11	0	0	36	27	36	3.36	3.88
Yr 3	2006								2.49
	2007	18	28	17	17	11	28	2.29	2.42
Yr 2	2006								2.04
	2007	21	10	10	52	29	0	1.87	1.95
Yr 1	2006								1.57
	2007	20	5	0	85	10	0	1.39	1.47
Prep	2006								0.97
	2007	20	0	30	70	0	0	0.95	0.97

Writing

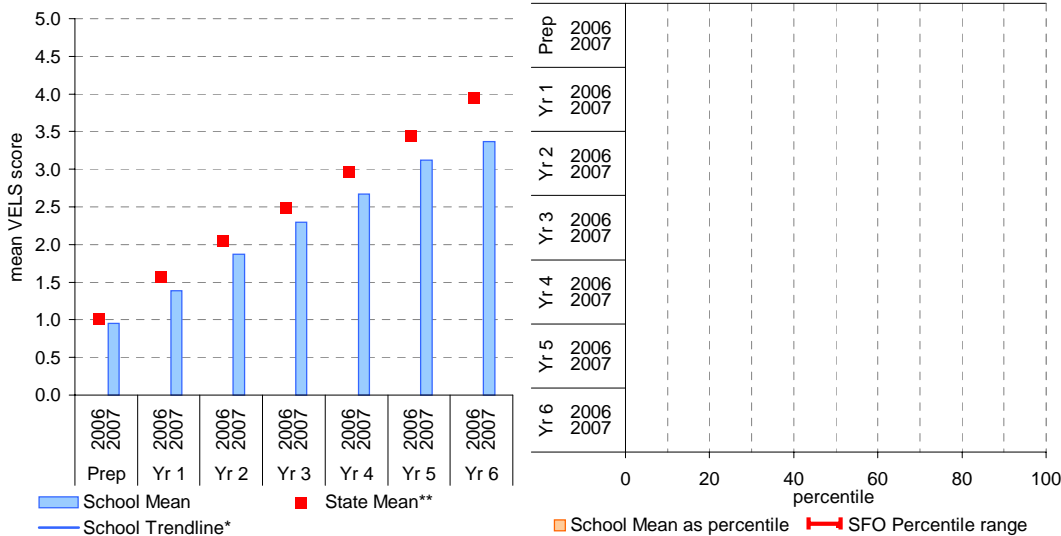
	total students	% of students by grade					Mean Score		
		A ^{^^}	B ^{^^}	C	D	E	School	State ^{**}	
Yr 4	2006								2.89
	2007	19	0	0	42	47	11	2.55	2.89
Yr 5	2006								3.38
	2007	17	0	0	53	41	6	3.04	3.38
Yr 6	2006								3.88
	2007	11	0	0	18	55	27	3.34	3.88
Yr 3	2006								2.42
	2007	17	0	24	47	18	12	2.24	2.42
Yr 2	2006								1.95
	2007	21	5	0	52	43	0	1.69	1.95
Yr 1	2006								1.47
	2007	20	5	0	80	15	0	1.30	1.47
Prep	2006								0.97
	2007	20	0	15	85	0	0	0.74	0.97



Reading

School Mean against State Mean

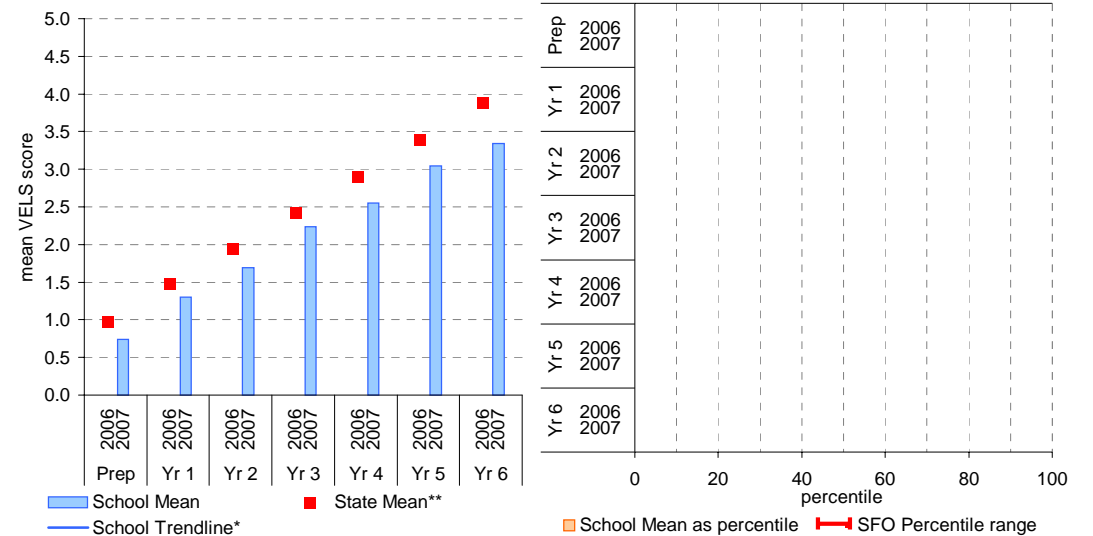
School Mean as percentile against SFO percentile range[^]



Writing

School Mean against State Mean

School Mean as percentile against SFO percentile range[^]



Teacher Judgments against the VELS - English (primary)

School no: 4833

School name: Campmeadows Primary School

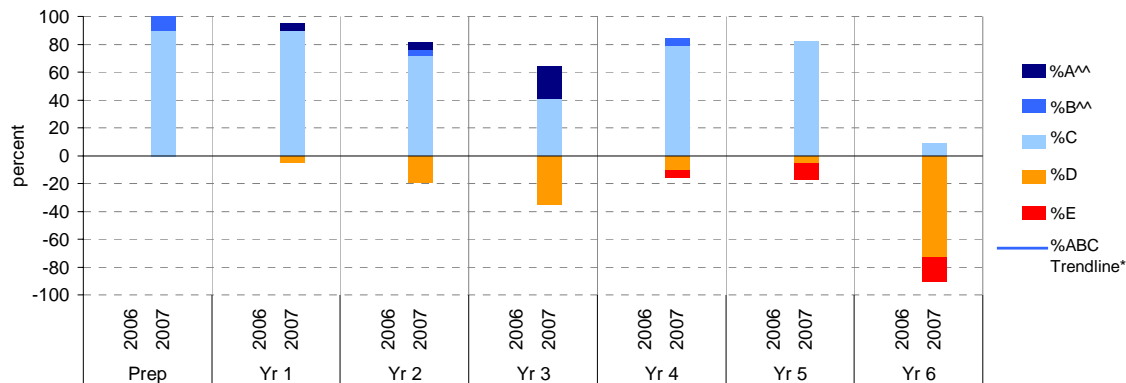
Source of data: Data retrieved electronically from CASES21.

Explanation: Teacher judgments of student progress against the VELS.

Notes: * The school trendline is being trialled. It is only plotted when there is data for each calendar year.
 ** In 2006, approx. 850 schools assessed their students against the 0.25 VELS scale. 2006 benchmarks are therefore based on a subset of schools. 2007 benchmarks will be calculated in August, when data from all schools has been submitted.
 ^ Percentiles for 2007 will be calculated in August, when data from all schools has been submitted.
 ^^ The cutoff between grades A and B changed in 2007. Further information is available on the following website:
<http://www.education.vic.gov.au/studentlearning/studentreports/schools/whatsnew.htm>.

Speaking and Listening

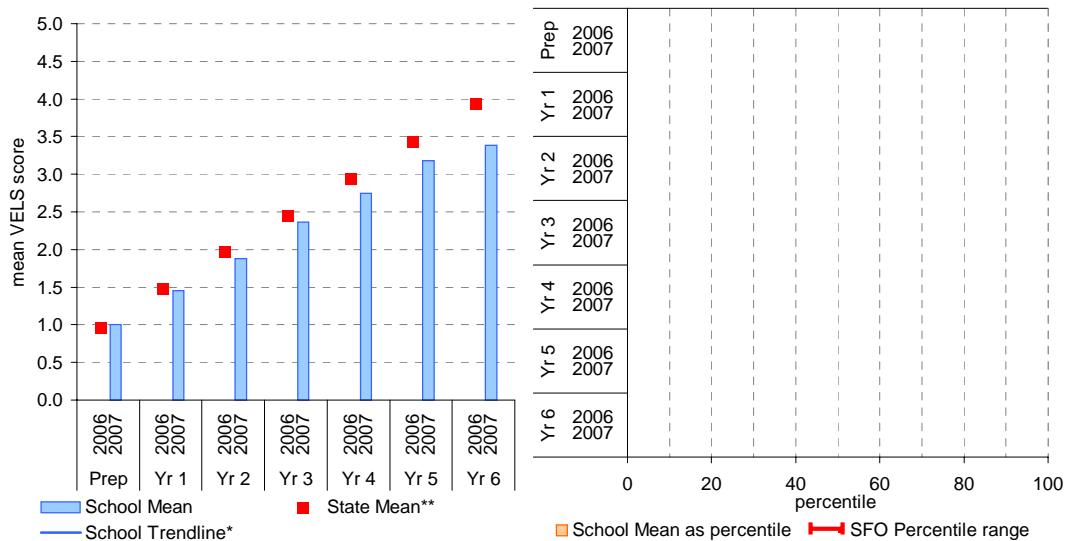
	total students	% of students by grade					Mean Score			total students	% of students by grade					Mean Score	
		A^^	B^^	C	D	E	School	State**			A^^	B^^	C	D	E	School	State**
Yr 4	2006							0.97		2006							2.94
	2007	20	0	10	90	0	0	1.00		2007	19	0	5	79	11	5	2.75
Yr 5	2006							1.48		2006							3.43
	2007	20	5	0	90	5	0	1.45		2007	17	0	0	82	6	12	3.18
Yr 6	2006							1.98		2006							3.93
	2007	21	5	5	71	19	0	1.88		2007	11	0	0	9	73	18	3.39
Yr 3	2006							2.45									
	2007	17	24	0	41	35	0	2.37									



Speaking and Listening

School Mean against State Mean

School Mean as percentile against SFO percentile range^



Teacher Judgments against the VELS - Mathematics (primary)

School no: 4833

School name: Campmeadows Primary School

Source of data: Data retrieved electronically from CASES21.

Explanation: Teacher judgments of student progress against the VELS.

Notes: * The school trendline is being trialled. It is only plotted when there is data for each calendar year.

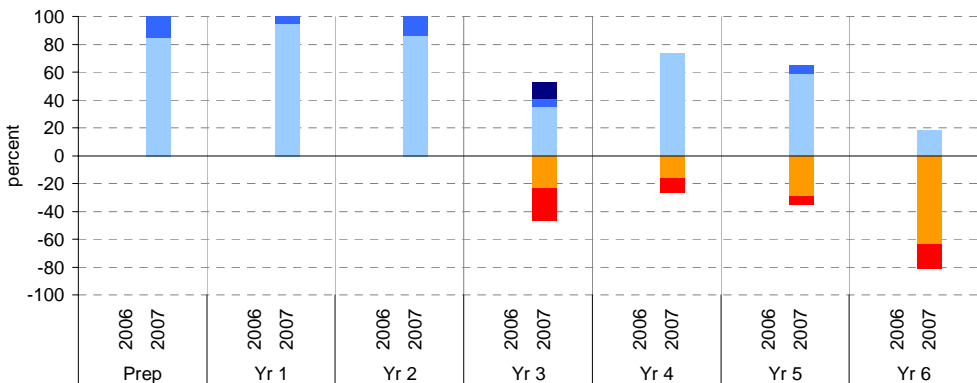
** In 2006, approx. 850 schools assessed their students against the 0.25 VELS scale. 2006 benchmarks are therefore based on a subset of schools. 2007 benchmarks will be calculated in August, when data from all schools has been submitted.

^ Percentiles for 2007 will be calculated in August, when data from all schools has been submitted.

^^ The cutoff between grades A and B changed in 2007. Further information is available on the following website: <http://www.education.vic.gov.au/studentlearning/studentreports/schools/whatsnew.htm>.

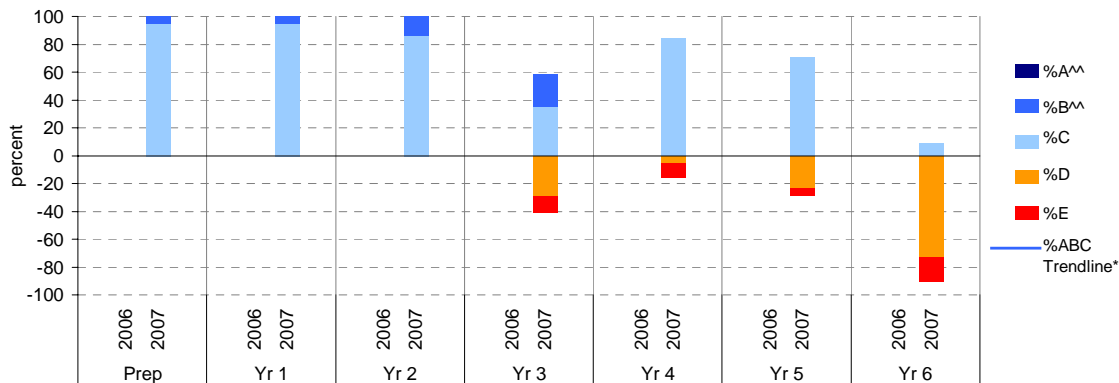
Number

	total students	% of students by grade					Mean Score		
		A ^{^^}	B ^{^^}	C	D	E	School	State ^{**}	
Yr 1	2006	0	15	85	0	0	0.81	1.00	2.95
	2007	20	0	15	85	0	0	0.81	
Yr 2	2006	0	5	95	0	0	1.40	1.51	3.43
	2007	20	0	5	95	0	0	1.40	
Yr 3	2006	0	14	86	0	0	1.95	1.99	3.93
	2007	21	0	14	86	0	0	1.95	
Yr 4	2006	12	6	35	24	24	2.09	2.46	2.62
	2007	17	12	6	35	24	24	2.09	
Yr 5	2006	0	0	74	16	11	2.62	3.43	3.15
	2007	19	0	0	74	16	11	2.62	
Yr 6	2006	0	6	59	29	6	3.15	3.93	3.41
	2007	17	0	6	59	29	6	3.15	



Measurement, Chance and Data

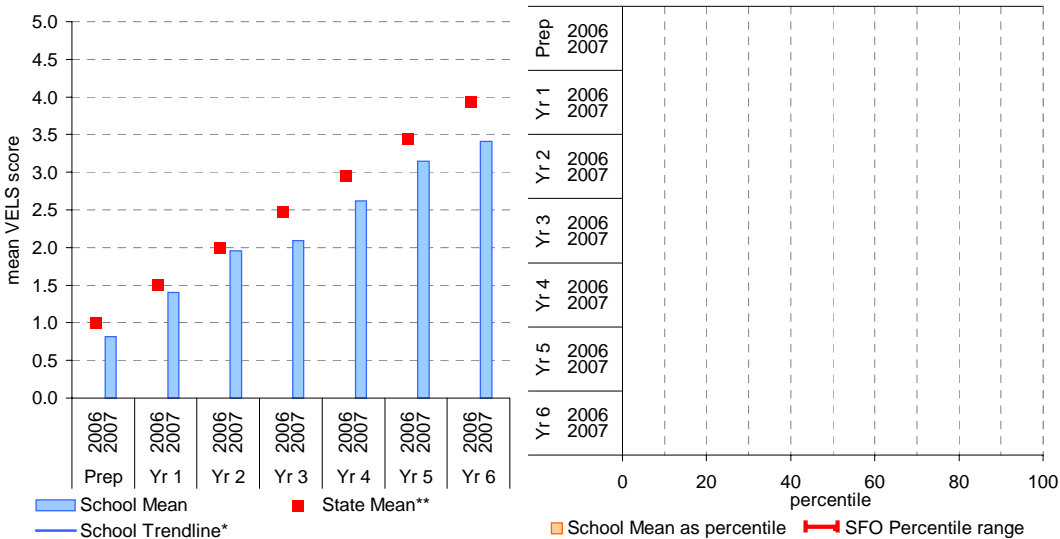
	total students	% of students by grade					Mean Score		
		A ^{^^}	B ^{^^}	C	D	E	School	State ^{**}	
Yr 1	2006	0	5	95	0	0	0.81	0.97	2.94
	2007	20	0	5	95	0	0	0.81	
Yr 2	2006	0	5	95	0	0	1.42	1.48	3.42
	2007	20	0	5	95	0	0	1.42	
Yr 3	2006	0	14	86	0	0	1.92	1.97	3.18
	2007	21	0	14	86	0	0	1.92	
Yr 4	2006	0	24	35	29	12	2.19	2.45	2.70
	2007	17	0	24	35	29	12	2.19	
Yr 5	2006	0	0	71	24	6	3.18	3.42	3.18
	2007	17	0	0	71	24	6	3.18	
Yr 6	2006	0	0	9	73	18	3.34	3.92	3.34
	2007	11	0	0	9	73	18	3.34	



Number

School Mean against State Mean

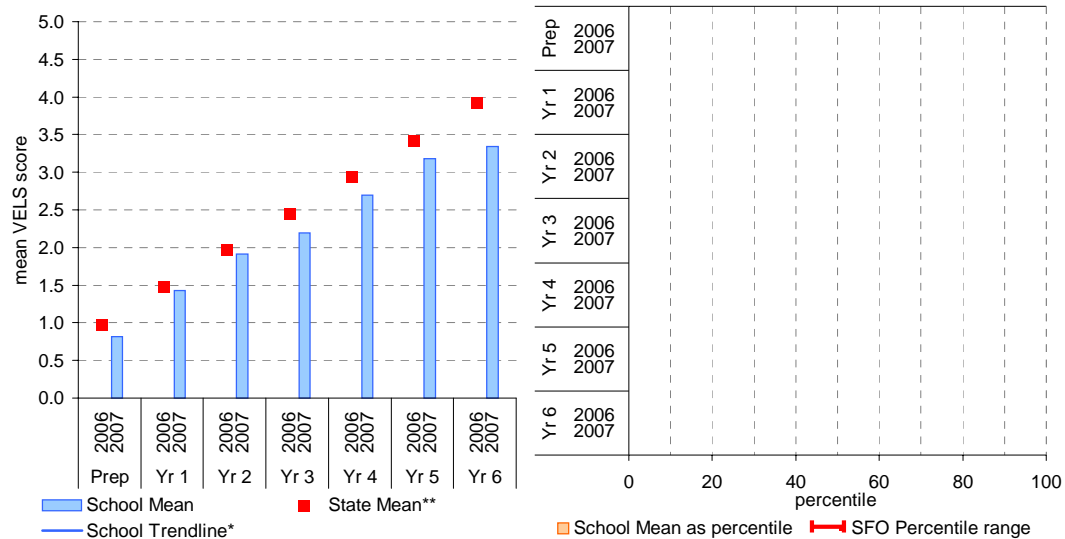
School Mean as percentile against SFO percentile range[^]



Measurement, Chance and Data

School Mean against State Mean

School Mean as percentile against SFO percentile range[^]



Teacher Judgments against the VELS - English (primary)

School no: 4833
School name: Campmeadows Primary School
Source of data: Data retrieved electronically from CASES21.
Explanation: Teacher judgments of student progress against the VELS.

Reading

Year Level	Year	Total ¹	Assessed ²	Level 1				Level 2				Level 3				Level 4				Level 5				Level 6				Level 6E			School mean	State mean*	Difference between school and state mean*			
				0.00	0.50	1.00	1.25	1.50	1.75	2.00	2.25	2.50	2.75	3.00	3.25	3.50	3.75	4.00	4.25	4.50	4.75	5.00	5.25	5.50	5.75	6.00	6.25	6.50	6.75							
prep	2007	20	20	5	9		6																												0.95	
prep	2006																																		1.01	
yr1	2007	20	20	2		7	10		1																										1.39	
prep	2005																																			
yr1	2006																																		1.57	
yr2	2007	21	21				6	5	6	2	2																								1.87	
prep	2004																																			
yr1	2005																																			
yr2	2006																																			2.04
yr3	2007	18	18	1		2	2		2	3		3	2	2		1																			2.29	
yr1	2004																																			
yr2	2005																																			
yr3	2006																																			
yr4	2007	19	19				1			1	4	9	4																						2.67	
yr2	2004																																			
yr3	2005																																			
yr4	2006																																			
yr5	2007	17	17							1		2	4	7	3																				3.12	
yr3	2004																																			
yr4	2005																																			
yr5	2006																																			
yr6	2007	11	11								1	3	1	2	4																				3.36	
yr4	2004																																			
yr5	2005																																			
yr6	2006																																			
yr5	2004																																			
yr6	2005																																			
yr6	2004																																			

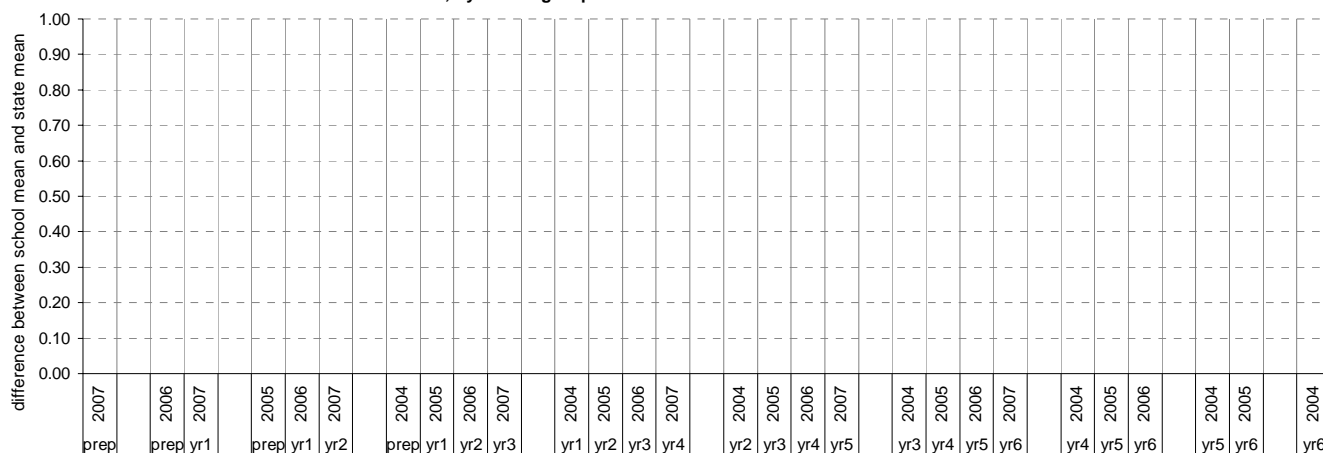
shading indicates a 'C' grade (at the expected standard) on the VELS scale.

¹ Students in group

² Total assessed

* Note: In 2006, approx. 850 schools assessed their students against the 0.25 VELS scale. 2006 benchmarks are therefore based on a subset of schools. 2007 benchmarks will be calculated in August, when data from all schools has been submitted.

Difference between school mean and state mean*, by cohort group



Teacher Judgments against the VELS - Mathematics (primary)

School no: 4833
 School name: Campmeadows Primary School
 Source of data: Data retrieved electronically from CASES21.
 Explanation: Teacher judgments of student progress against the VELS.

Measurement, Chance and Data

Year Level	Year	Total ¹	Assessed ²	Level 1				Level 2				Level 3				Level 4				Level 5				Level 6				Level 6E				School mean	State mean*	Difference between school and state mean*		
				0.00	0.50	1.00	1.25	1.50	1.75	2.00	2.25	2.50	2.75	3.00	3.25	3.50	3.75	4.00	4.25	4.50	4.75	5.00	5.25	5.50	5.75	6.00	6.25	6.50	6.75							
prep	2007	20	20	8	11		1																													0.81
prep	2006																																			0.97
yr1	2007	20	20				7	12	1																											1.42
prep	2005																																			
yr1	2006																																			1.48
yr2	2007	21	21						10	8		3																								1.92
prep	2004																																			
yr1	2005																																			
yr2	2006																																			
yr3	2007	18	17					2	3	2		4	2	4																						2.19
yr1	2004																																			
yr2	2005																																			
yr3	2006																																			
yr4	2007	19	19				1	1				1	8	8																						2.70
yr2	2004																																			
yr3	2005																																			
yr4	2006																																			
yr5	2007	17	17									1	4	10	2																					3.18
yr3	2004																																			
yr4	2005																																			
yr5	2006																																			
yr6	2007	11	11									1	1	3	5	1																				3.34
yr4	2004																																			
yr5	2005																																			
yr6	2006																																			
yr5	2004																																			
yr6	2005																																			
yr6	2004																																			

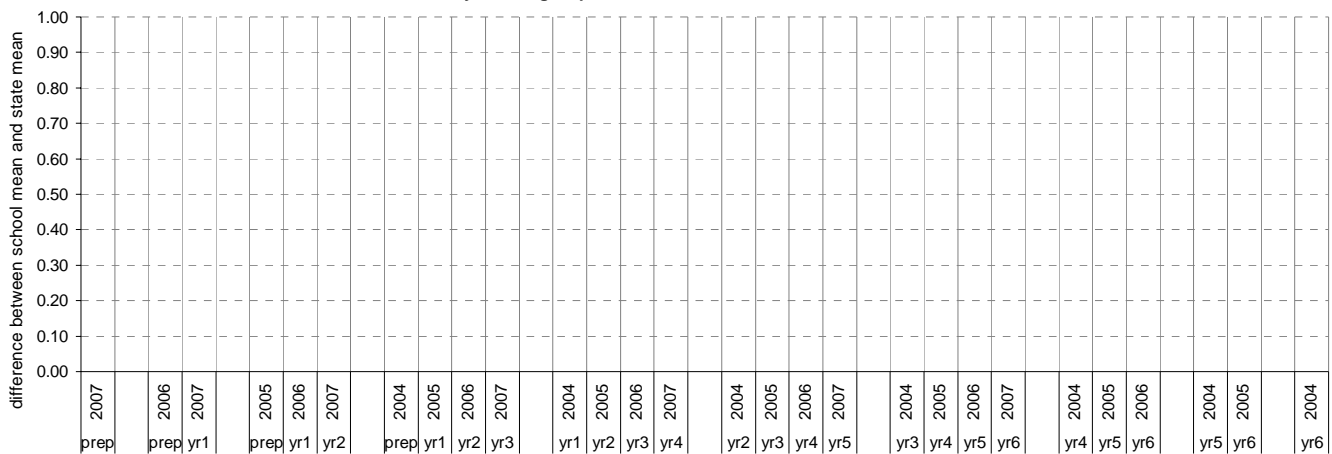
shading indicates a 'C' grade (at the expected standard) on the VELS scale.

¹ Students in group

² Total assessed

* Note: In 2006, approx. 850 schools assessed their students against the 0.25 VELS scale. 2006 benchmarks are therefore based on a subset of schools. 2007 benchmarks will be calculated in August, when data from all schools has been submitted.

Difference between school mean and state mean*, by cohort group



AIM Year 3 and 5: Reading

School no: 4833

School name: Campmeadows Primary School

Source of data: Victorian Curriculum and Assessment Authority.

Explanation: The Achievement Improvement Monitor (AIM) is a statewide assessment program conducted each year for students in Years 3, 5, 7 and 9. For more detailed AIM data, refer to the AIM Data Service website at <http://aimds.vcaa.vic.edu.au>.

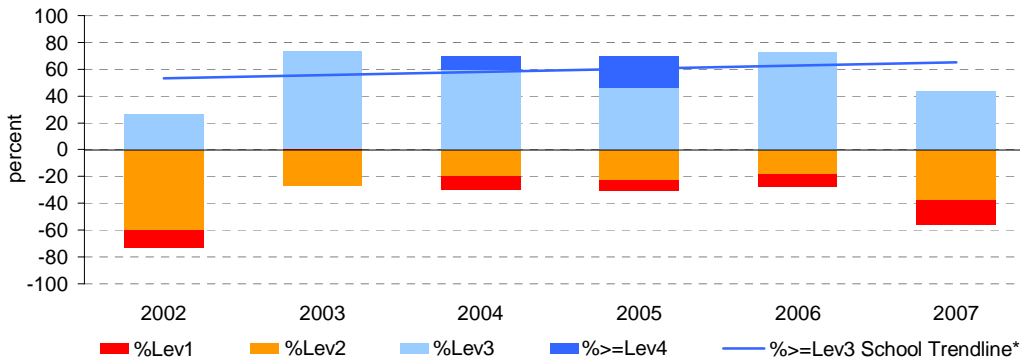
Notes: * The school trendline is being trialled. It is only plotted when there is data for each calendar year.

** % student participation = (students who participated in AIM / Feb enrolments) * 100

Year 3

	student participation		% of students by VELs level								Mean CSF / VELs Score	
	(n)	(%)**	Lev1	Lev2	Lev3	Lev4	Lev5	Lev6	Lev6E	School	State	
2002	30	88	13	60	27	0	0	0	0	1.6	2.4	
2003	15	68	0	27	73	0	0	0	0	2.2	2.3	
2004	10	83	10	20	60	10	0	0	0	2.3	2.3	
2005	13	100	8	23	46	23	0	0	0	2.2	2.4	
2006	11	69	9	18	73	0	0	0	0	2.2	2.3	
2007	16	94	19	38	44	0	0	0	0	1.7	2.3	

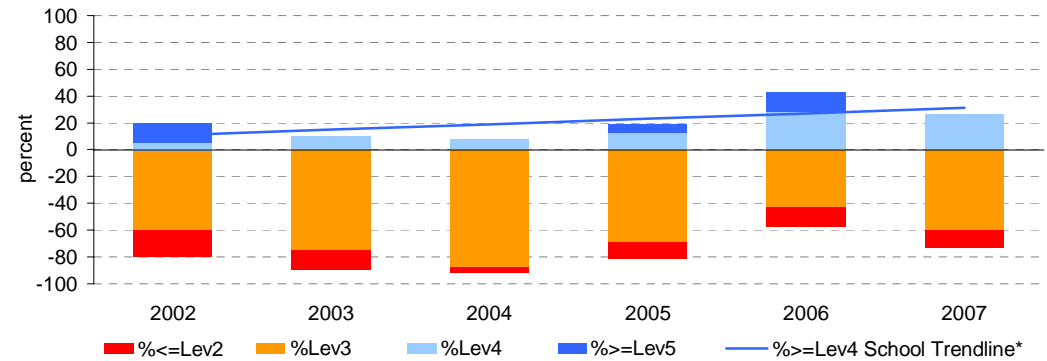
Proportion of students by VELs level



Year 5

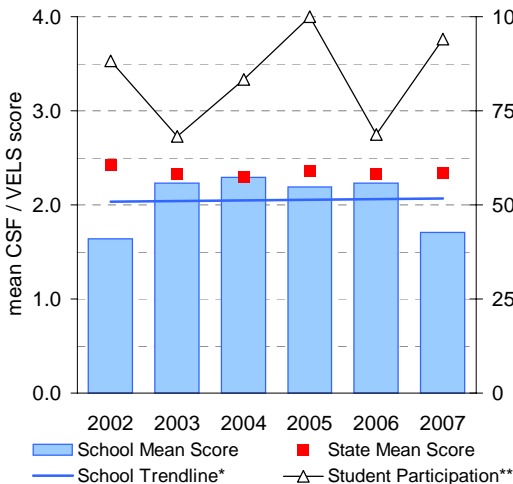
	student participation		% of students by VELs level								Mean CSF / VELs Score	
	(n)	(%)**	Lev1	Lev2	Lev3	Lev4	Lev5	Lev6	Lev6E	School	State	
2002	20	91	0	20	60	5	15	0	0	2.6	3.1	
2003	20	91	0	15	75	10	0	0	0	2.5	3.2	
2004	25	93	0	4	88	8	0	0	0	2.7	3.2	
2005	16	89	0	13	69	13	6	0	0	2.6	3.2	
2006	7	64	0	14	43	29	14	0	0	3.1	3.1	
2007	15	88	0	13	60	27	0	0	0	2.7	3.2	

Proportion of students by VELs level

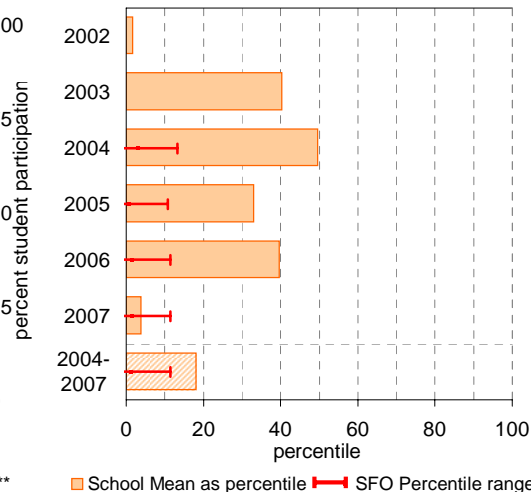


Year 3

School Mean against State Mean, including Participation

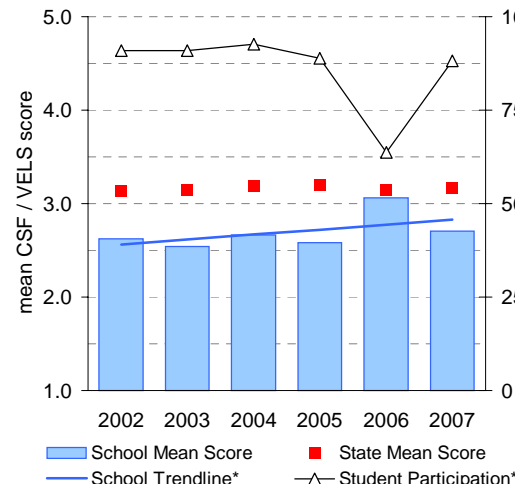


School Mean as percentile against SFO percentile range

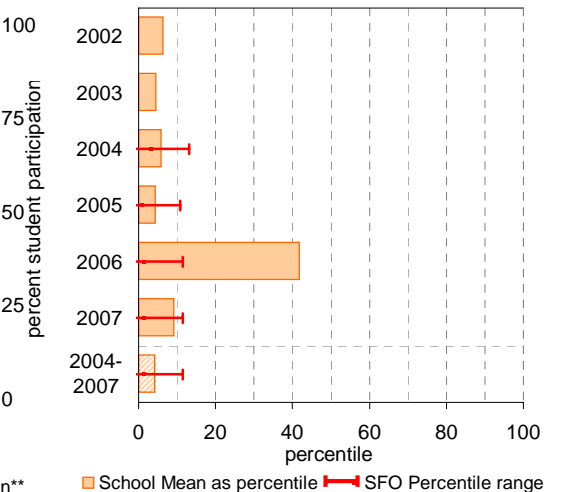


Year 5

School Mean against State Mean, including Participation



School Mean as percentile against SFO percentile range



AIM Year 3 and 5: Number

School no: 4833

School name: Campmeadows Primary School

Source of data: Victorian Curriculum and Assessment Authority.

Explanation: The Achievement Improvement Monitor (AIM) is a statewide assessment program conducted each year for students in Years 3, 5, 7 and 9. For more detailed AIM data, refer to the AIM Data Service website at <http://aimds.vcaa.vic.edu.au>.

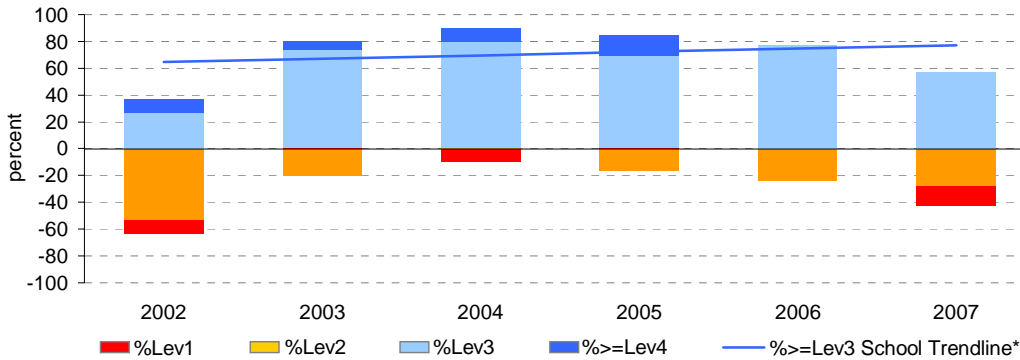
Notes: * The school trendline is being trialled. It is only plotted when there is data for each calendar year.

** % student participation = (students who participated in AIM / Feb enrolments) * 100

Year 3

	student participation		% of students by VELs level							Mean CSF / VELs Score	
	(n)	(%)**	Lev1	Lev2	Lev3	Lev4	Lev5	Lev6	Lev6E	School	State
2002	30	88	10	53	27	10	0	0	0	2.0	2.4
2003	15	68	0	20	73	7	0	0	0	2.3	2.4
2004	10	83	10	0	80	10	0	0	0	2.3	2.4
2005	13	100	0	15	69	15	0	0	0	2.3	2.4
2006	13	81	0	23	77	0	0	0	0	2.1	2.4
2007	14	82	14	29	57	0	0	0	0	1.8	2.4

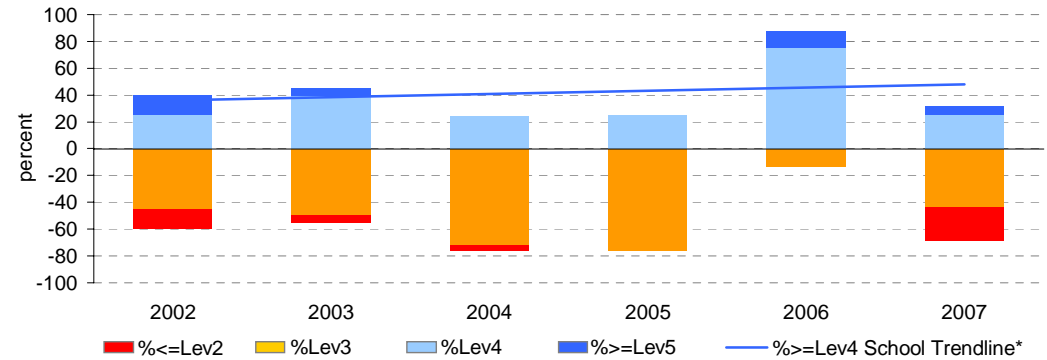
Proportion of students by VELs level



Year 5

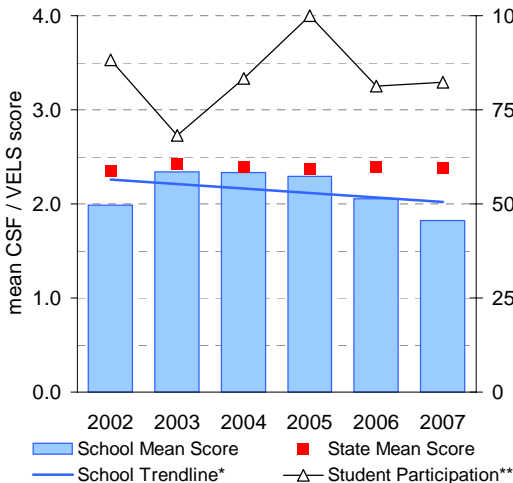
	student participation		% of students by VELs level							Mean CSF / VELs Score	
	(n)	(%)**	Lev1	Lev2	Lev3	Lev4	Lev5	Lev6	Lev6E	School	State
2002	20	91	0	15	45	25	15	0	0	2.9	3.3
2003	20	91	0	5	50	40	5	0	0	2.9	3.1
2004	25	93	0	4	72	24	0	0	0	2.8	3.2
2005	16	89	0	0	75	25	0	0	0	2.6	3.2
2006	8	73	0	0	13	75	13	0	0	3.5	3.2
2007	16	94	0	25	44	25	6	0	0	2.6	3.2

Proportion of students by VELs level

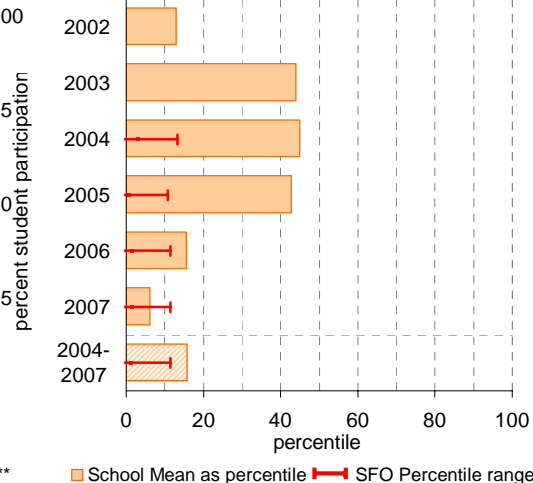


Year 3

School Mean against State Mean, including Participation

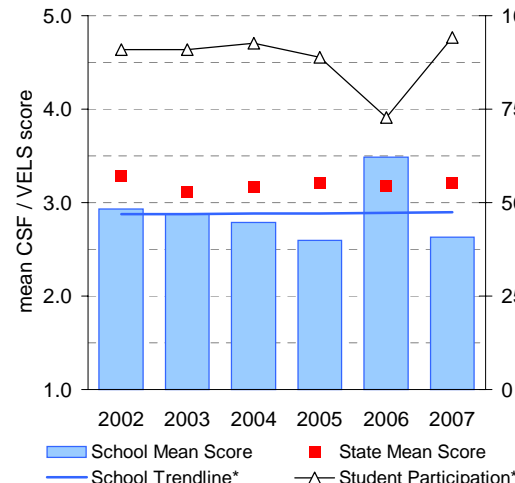


School Mean as percentile against SFO percentile range

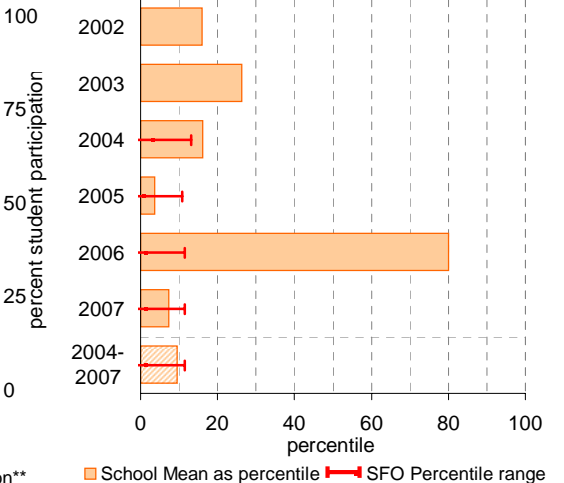


Year 5

School Mean against State Mean, including Participation



School Mean as percentile against SFO percentile range



Teacher Assessment of Student Progress (PSD students)

School no: 4833

School name: Campmeadows Primary School

Explanation: Teachers assess their students' progress against the 8 VELs Domains / CSF KLAs using a 6-point scale (students in special schools and those who cannot be assessed against the VELs / CSF).

Source of data: Data transmitted from school to DEECD via an online web-form.

	No progress (%)	Little progress (%)	Satisfactory progress (%)	Good progress (%)	Very good progress (%)	Excellent progress (%)	Total students assessed ¹ (no.)
2003 (by CSF KLA)							
English							
Mathematics							
Science							
Technology							
The Arts							
H&PE							
SOSE							
2004 (by CSF KLA)							
English							
Mathematics							
Science							
Technology							
The Arts							
H&PE							
SOSE							
2005 (by CSF KLA)							
English							
Mathematics							
Science							
Technology							
The Arts							
H&PE							
SOSE							
2006 (by VELs Domain)							
English							
Mathematics							
Science							
Technology							
The Arts							
H&PE							
SOSE							
2007 (by VELs Domain)							
English							
Mathematics							
Science							
ICT							
The Arts							
H&PE							
Civics & Citizenship							
2006 Primary state benchmarks (by VELs Domain)*							
English	2	15	26	30	19	8	
Mathematics	2	17	30	29	14	6	
Science	2	14	33	33	12	6	
Technology	2	8	33	34	15	8	
The Arts	1	9	33	32	17	7	
H&PE	1	5	29	34	24	8	
SOSE	2	11	32	30	17	8	

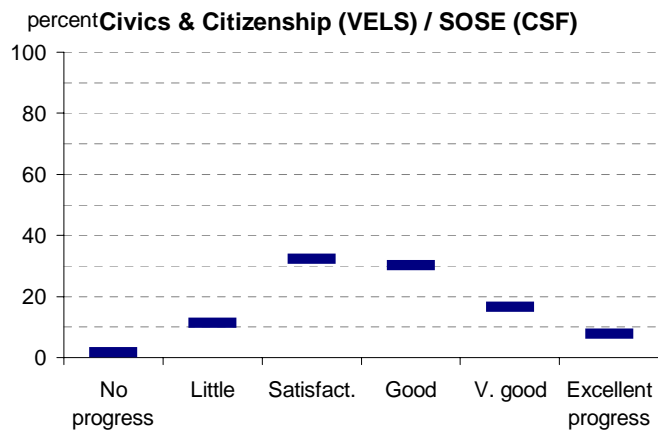
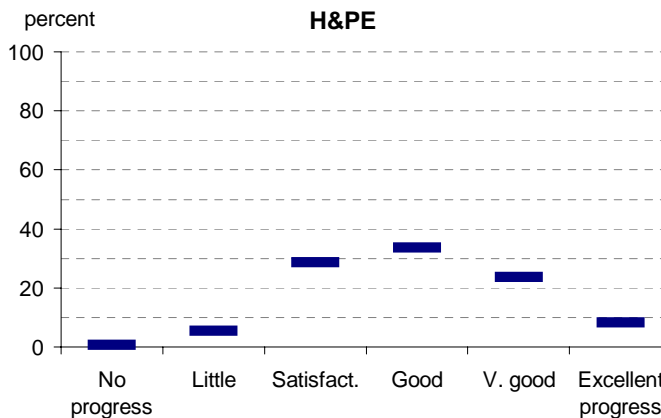
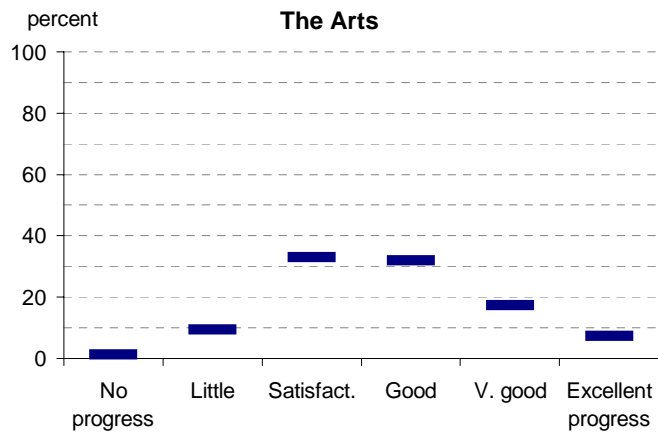
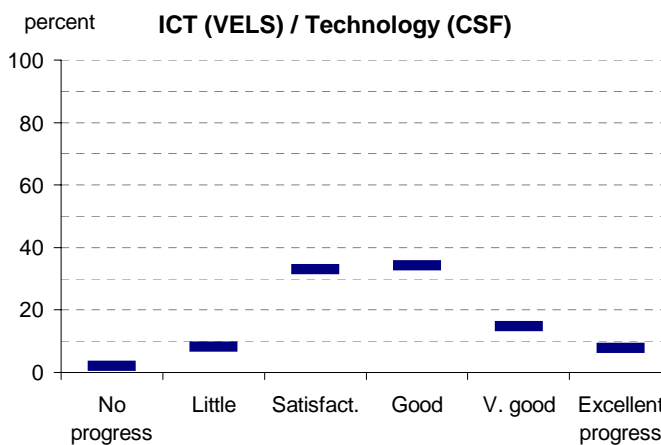
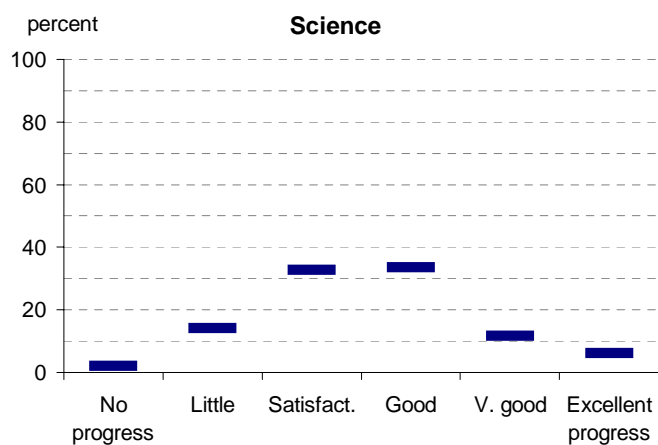
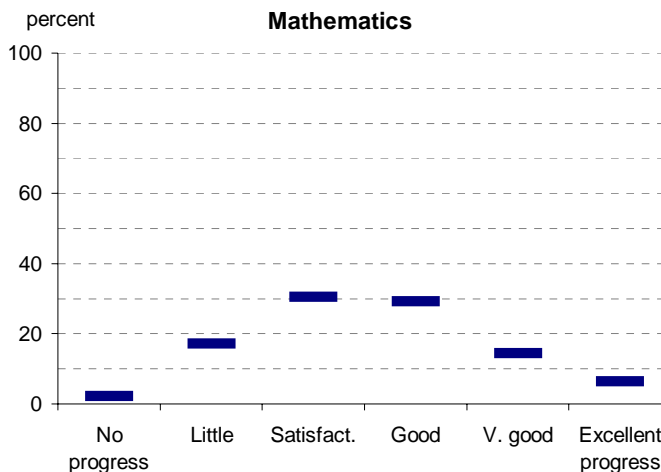
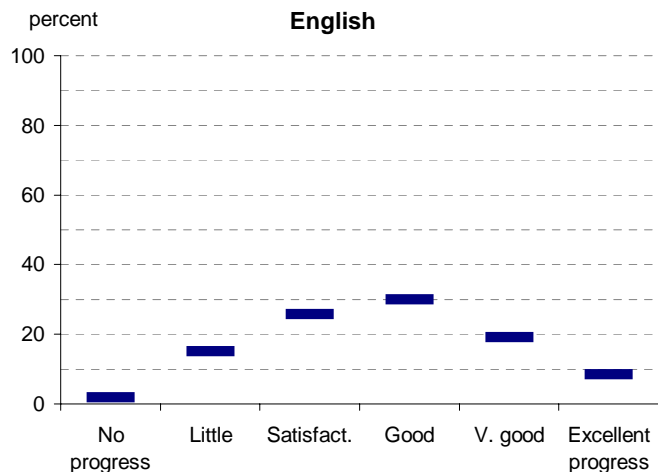
Notes: ¹ If schools provided percentages only, it is not possible to report the number of students assessed. In these cases, the total percentage (100) will be shown.

* 2007 benchmarks will be calculated in August, when data from all schools has been submitted.

Teacher Assessment of Student Progress (PSD students)

School no: 4833

School name: Campmeadows Primary School



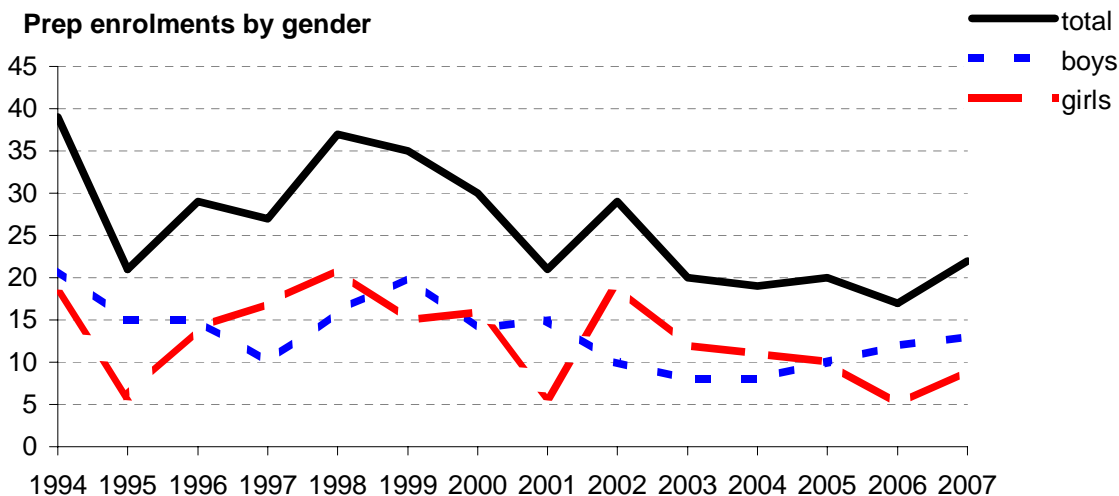
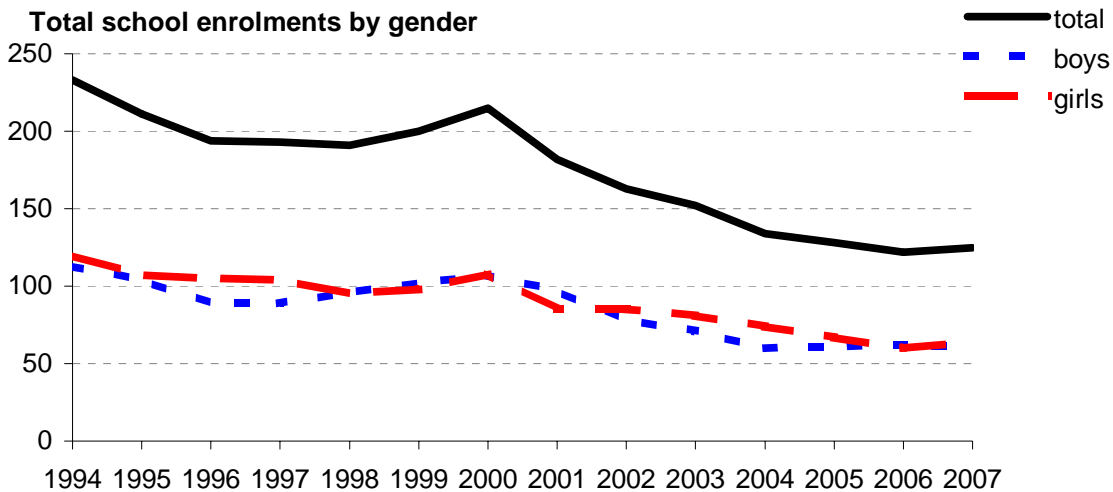
- 2003 (by CSF KLA)
- 2004 (by CSF KLA)
- 2005 (by CSF KLA)
- 2006 (by VELS Domain)
- 2007 (by VELS Domain)
- 2006 Primary state benchmarks (by VELS Domain)*

Notes: * 2007 benchmarks will be calculated in August, when data from all schools has been submitted.

Enrolments

School no: 4833
School name: Campmeadows Primary School
Explanation: Enrolments at February census.
Source of data: February census.

Year	Total school enrolment			Prep enrolment			Year 7 enrolments		
	boys	girls	total	boys	girls	total	boys	girls	total
1994	113	120	233	21	18	39			
1995	104	107	211	15	6	21			
1996	89	105	194	15	14	29			
1997	89	104	193	10	17	27			
1998	96	95	191	16	21	37			
1999	102	98	200	20	15	35			
2000	107	108	215	14	16	30			
2001	97	85	182	15	6	21			
2002	78	85	163	10	19	29			
2003	71	81	152	8	12	20			
2004	60	74	134	8	11	19			
2005	61	67	128	10	10	20			
2006	62	60	122	12	5	17			
2007	61	64	125	13	9	22			



Student Absence

School no: 4833

School name: Campmeadows Primary School

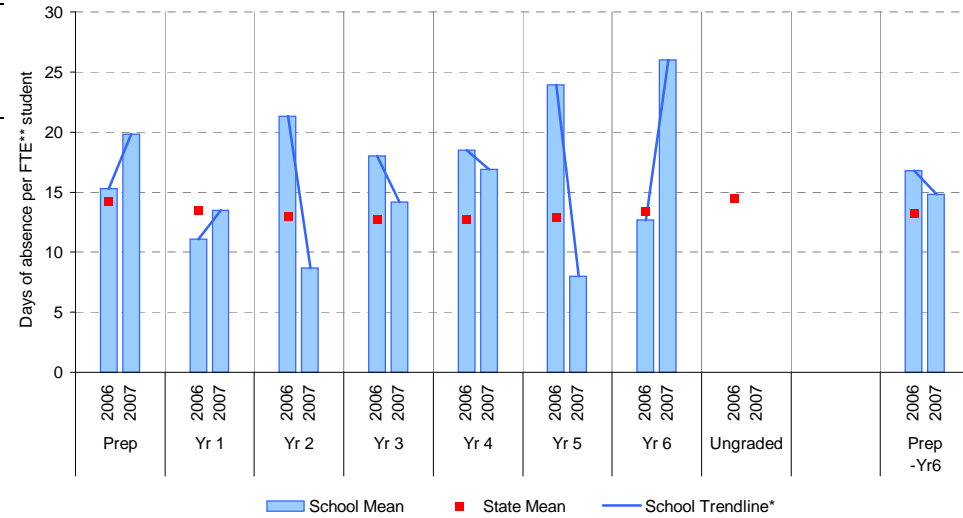
Source of data: Data retrieved electronically from CASES21.

Explanation: The average (mean) number of absent days† per student. Up to 2006, the formula used to calculate the average number of absent days per student was based on student headcount. From 2006, the formula was based on FTE** students. The new formula provides a more accurate summary of student absence. For 2006, student absence is provided for both student headcount and FTE student. Note that 20 absent days equates to 1 absent day per fortnight, and 10 absent days to 1 absent day per month.

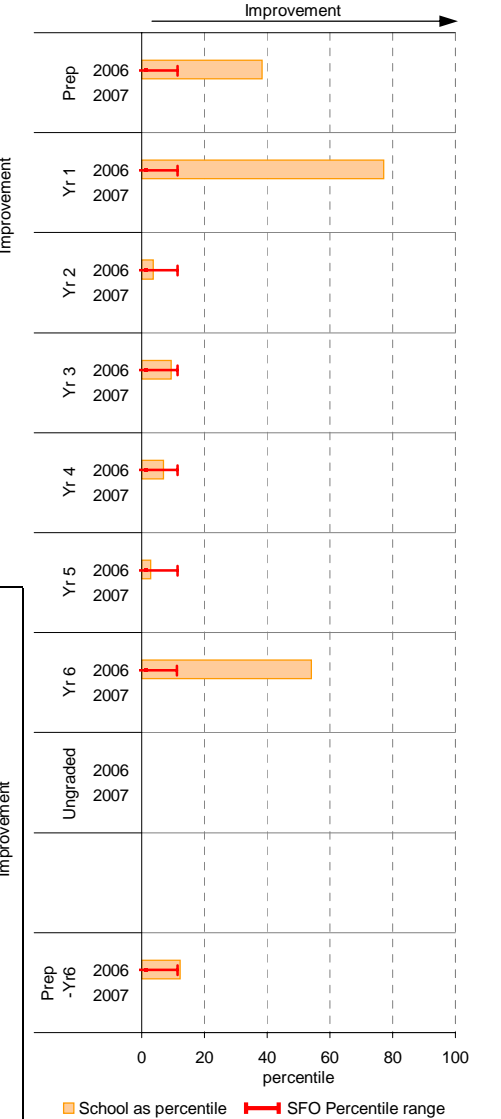
Student Absence (by FTE** student, 2006 and onward)

	School		2006 state benchmark^			
	2006	2007	25th ptile	75th ptile		
	Enrolments	Avg absent days / FTE** student	Enrolments	Avg absent days / FTE** student	Mean	
Prep	16.4	15.3	20.8	19.8	11.6	17.1
Yr 1	20.4	11.1	19.5	13.5	11.3	15.6
Yr 2	18.9	21.3	21.9	8.7	10.7	15.1
Yr 3	16.6	18	17.4	14.2	10.7	14.8
Yr 4	15.6	18.5	20.2	16.9	10.6	14.7
Yr 5	11.6	23.9	16.9	8	10.8	15.2
Yr 6	19.1	12.7	12.0	26	11.0	15.8
Ungraded						14.5
P-6 mean		16.8		14.8		13.2

School Mean against State Mean^



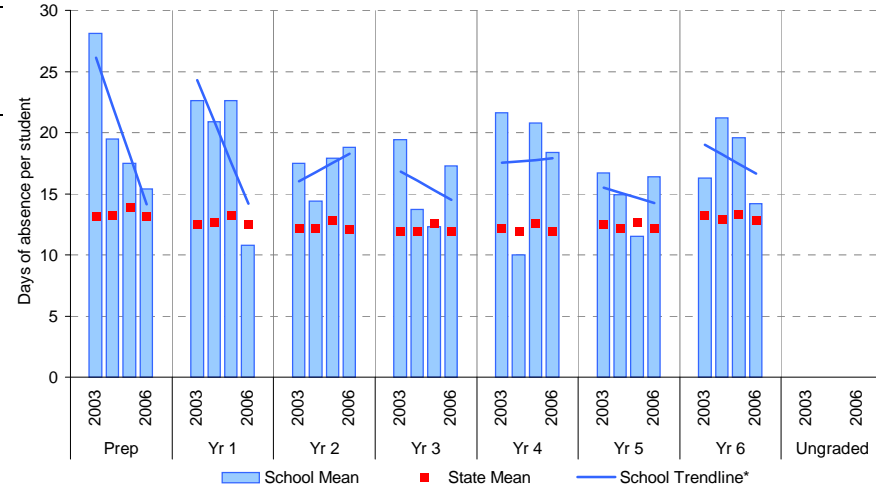
School Mean as percentile against SFO percentile range^



Student Absence (by student headcount, 2003-2006)

	School							
	2003	2004	2005	2006				
	Enrolments	Avg absent days / student	Enrolments	Avg absent days / student	Enrolments	Avg absent days / student	Enrolments	Avg absent days / student
Prep	20	28.1	21	19.5	24	17.5	18	15.4
Yr 1	21	22.6	27	20.9	23	22.6	21	10.8
Yr 2	14	17.5	21	14.4	21	17.9	24	18.8
Yr 3	22	19.4	12	13.7	19	12.3	21	17.3
Yr 4	30	21.6	23	10	15	20.8	19	18.4
Yr 5	22	16.7	32	14.9	20	11.5	18	16.4
Yr 6	23	16.3	20	21.2	28	19.6	20	14.2
Ungraded								
P-6 mean		20.4		16.5		17.6		16

School Mean against State Mean



Improvement

Notes: † Includes non-curriculum absences only (absence codes 200, 201, 202, 203, 205, 206, 207, 208, 209, 210, 211, 300, 401, 500, 700, 800, 804, 805, 900).

* The school trendline is being trialled. It is only plotted when there is data for each calendar year.
 ** FTE = Full Time Equivalent (including part-time and part-year fractions).

^ 2007 benchmarks will be calculated in August, when data from all schools has been submitted.

Parent Opinion

School no: 4833

School name: Campmeadows Primary School

Explanation: A self-completion questionnaire to obtain parents' opinions of the school. Parents rated a number of statements using a scale where 1=strongly disagree & 7=strongly agree. The statements were grouped into the following categories.

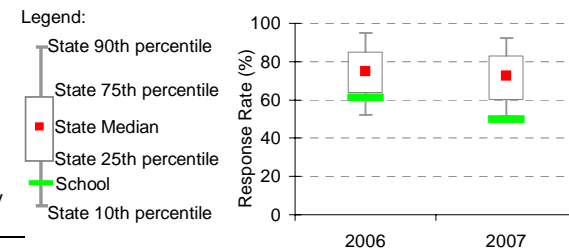
Source of data: Data scanned from questionnaires completed by parents.

Variable No.	Name	Year	School mean	State Primary median
1	School Improvement	2006	5.73	5.71
		2007	5.92	5.75
2	Approachability	2006	5.88	5.81
		2007	5.95	5.82
3	Teacher Morale	2006	5.89	5.82
		2007	5.93	5.86
4	Parent Input	2006	5.67	5.59
		2007	6.05	5.62
5	Stimulating Learning	2006	5.98	5.81
		2007	6.05	5.84
6	Behaviour Management	2006	5.63	5.51
		2007	5.59	5.54
7	Reporting	2006	6.21	5.45
		2007	5.95	5.51

Variable No.	Name	Year	School mean	State Primary median
8	Learning Focus	2006	5.74	5.71
		2007	5.96	5.72
9	Transitions	2006	5.93	5.72
		2007	5.97	5.76
10	Extra Curricula	2006	5.41	5.07
		2007	5.80	5.17
11	Homework	2006	5.62	5.23
		2007	6.10	5.23
12	General Satisfaction	2006	5.63	5.87
		2007	6.21	5.88
13	Student Safety^	2006	5.35	5.13
		2007	4.45	5.12
14	Classroom Behaviour^	2006	4.41	4.15
		2007	4.57	4.18

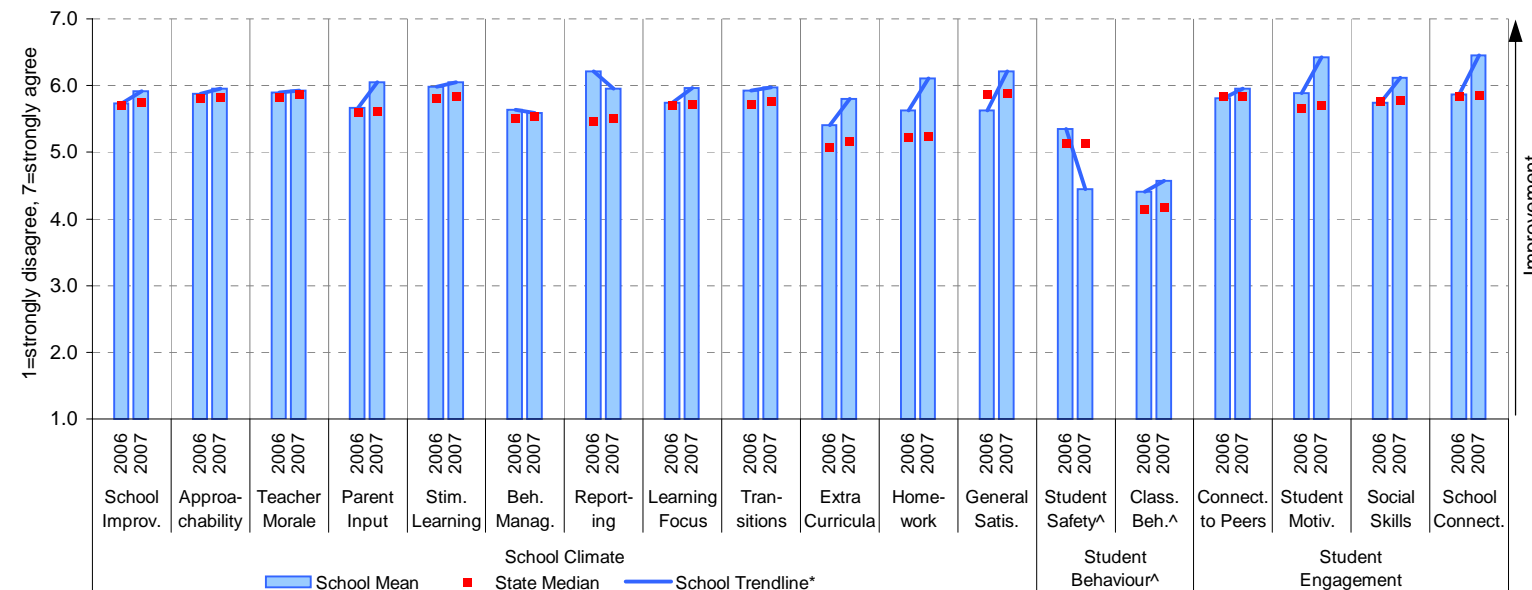
Variable No.	Name	Year	School mean	State Primary median
15	Connectedness to Peers	2006	5.81	5.83
		2007	5.95	5.83
16	Student Motivation	2006	5.88	5.66
		2007	6.43	5.69
17	Social Skills	2006	5.75	5.76
		2007	6.12	5.78
18	School Connectedness	2006	5.87	5.83
		2007	6.45	5.85

School response rate** against Primary school distribution



	No. of respondents	No. invited	Response Rate
2006	27	44	61.4%
2007	20	40	50%

School Mean against Primary State Mean



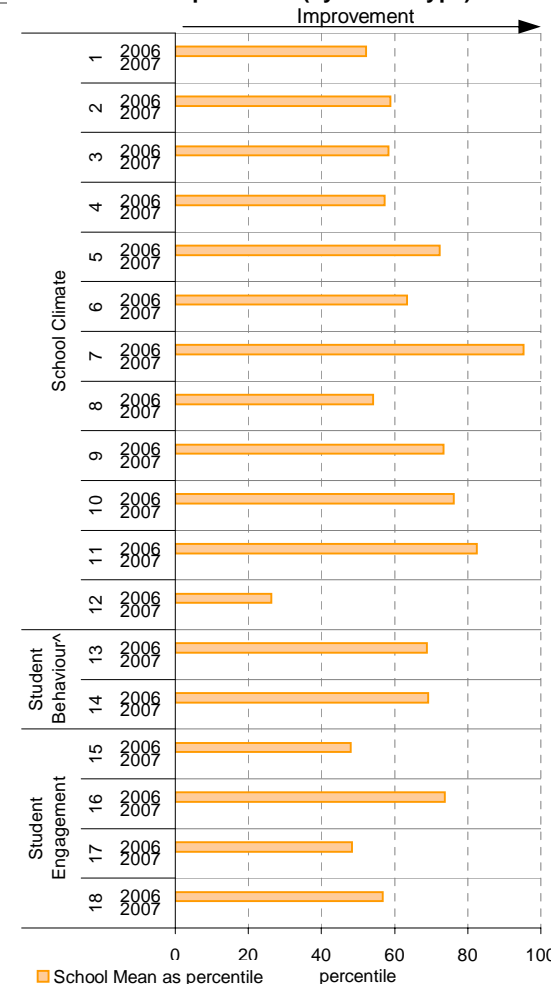
Notes: * The school trendline is being trialled. It is only plotted when there is data for each calendar year.

** If there were 6 or less respondents, table data is not shown for confidentiality reasons. If there were 3 or less respondents, graph data is not shown for confidentiality reasons.

^ Parents' responses to all negatively phrased questions have been reversed for reporting purposes. Across all variables, the higher the score or percentile rank, the more positive parents' perceptions.

^^ Benchmarks available for Primary, Secondary, Pri/Sec, Special and SDS schools.

School Mean as percentile (by school type)



Parent Opinion (pre-2006)

School no: 4833

School name: Campmeadows Primary School

Explanation: A self-completion questionnaire to obtain parents' opinions of the school. Parents rated a number of statements using a scale where 1=strongly disagree & 6=strongly agree. The statements were grouped into the following categories.

Source of data: From 2004, data scanned from questionnaires completed by parents.

Year	Number of respondents
2004	52
2005	28

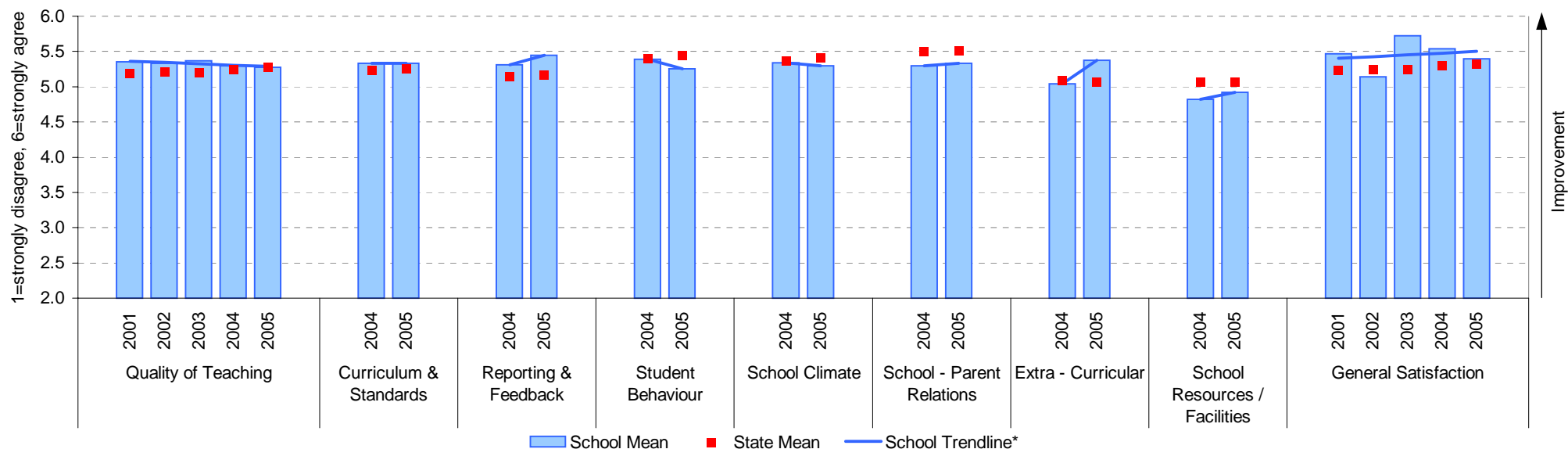
Variable	Year	School Mean	Primary State Mean
Quality of Teaching	2001	5.35	5.18
	2002	5.33	5.21
	2003	5.37	5.20
	2004	5.30	5.24
	2005	5.28	5.28
Curriculum and Standards	2004	5.33	5.23
	2005	5.33	5.25

Variable	Year	School Mean	Primary State Mean
Reporting and Feedback	2004	5.31	5.15
	2005	5.45	5.16
Student Behaviour	2004	5.39	5.40
	2005	5.25	5.44
School Climate	2004	5.34	5.37
	2005	5.29	5.41

Variable	Year	School Mean	Primary State Mean
School / Parent Relations	2004	5.30	5.50
	2005	5.33	5.51
Extra-Curricular	2004	5.04	5.08
	2005	5.37	5.07
School Resources / Facilities	2004	4.82	5.07
	2005	4.92	5.06

Variable	Year	School Mean	Primary State Mean
General Satisfaction	2001	5.47	5.23
	2002	5.14	5.25
	2003	5.72	5.25
	2004	5.54	5.30
	2005	5.39	5.33

School Mean against Primary State Mean



Notes: * The school trendline is being trialled. It is only plotted when there is data for each calendar year.

^^ State Means available for Primary, Secondary, Pri/Sec, Special and SDS schools.

Staff Opinion

School no: 4833

School name: Campmeadows Primary School

Explanation: A self-completion questionnaire to obtain the staff's opinions of the school. The survey was administered online using the School Organisational Health Questionnaire.

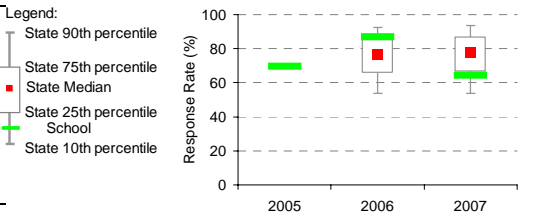
Source of data: Data transmitted from school staff to DEECD via an online survey application.

Variable	No.	Name	Year	School mean	State Primary median
1 Individual Morale			2005	81.0	75.5
			2006	70.3	75.6
			2007	76.3	76.8
2 School Morale			2005	63.1	77.6
			2006	60.5	78.1
			2007	71.7	79.2
3 Supportive Leadership			2005	65.6	80.0
			2006	66.2	80.0
			2007	88.9	80.6
4 Role Clarity			2005	79.7	79.2
			2006	69.4	79.6
			2007	81.9	80.1
5 Professional Interaction			2005	72.3	80.5
			2006	69.8	80.7
			2007	74.6	81.9
6 Participative Decision-Making			2005	70.3	74.8
			2006	65.3	75.1
			2007	82.6	76.3
7 Goal Congruence			2005	78.8	81.4
			2006	71.8	81.7
			2007	77.8	82.6

Variable	No.	Name	Year	School mean	State Primary median
8 Appraisal & Recognition			2005	66.9	70.5
			2006	66.3	71.6
			2007	83.8	73.1
9 Professional Growth			2005	77.8	73.8
			2006	67.8	74.2
			2007	78.9	76.0
10 Curriculum Coordination			2005	69.9	74.6
			2006	70.3	75.0
			2007	56.3	75.6
11 Effective Discipline Policy			2005	68.2	79.7
			2006	60.9	79.9
			2007	75.8	80.9
12 Student Orientation			2005	86.4	85.9
			2006	79.9	86.1
			2007	81.3	86.6
13 Student Motivation			2005	68.2	75.9
			2006	67.9	76.8
			2007	65.0	77.9
14 Student Decision-Making			2005	64.6	68.4
			2006	62.5	69.4
			2007	60.0	71.3

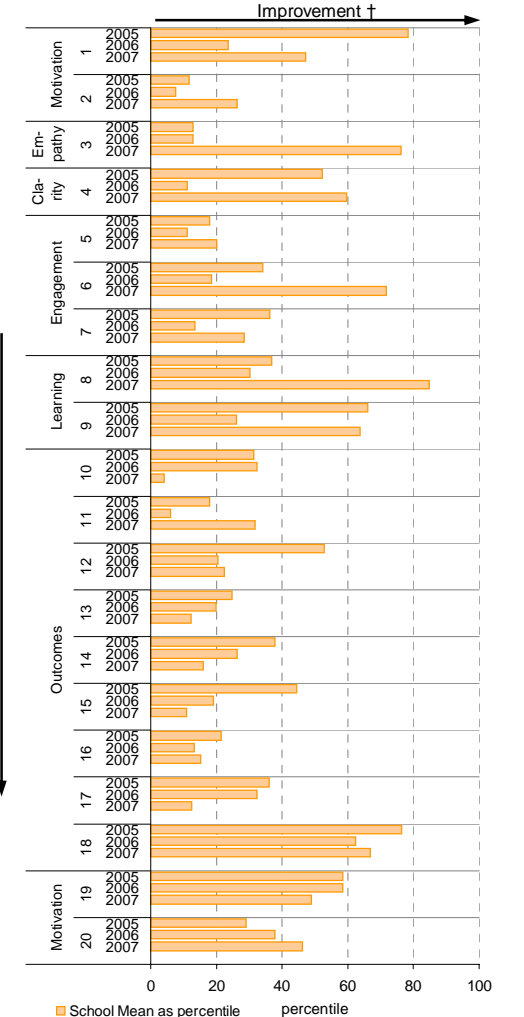
Variable	No.	Name	Year	School mean	State Primary median
15 Learning Environment			2005	79.0	80.3
			2006	72.9	81.3
			2007	70.3	82.5
16 Student Misbehaviour			2005	38.6	22.9
			2006	43.1	21.7
			2007	39.6	21.5
17 Classroom Misbehaviour			2005	17.0	14.6
			2006	17.3	13.8
			2007	22.1	13.3
18 Excessive Work Demands			2005	32.8	42.8
			2006	38.8	42.9
			2007	36.8	43.2
19 Individual Distress			2005	20.2	22.2
			2006	20.2	21.6
			2007	21.5	21.1
20 School Distress			2005	37.2	29.2
			2006	33.8	28.8
			2007	30.0	28.3

School response rate** against Primary school distribution

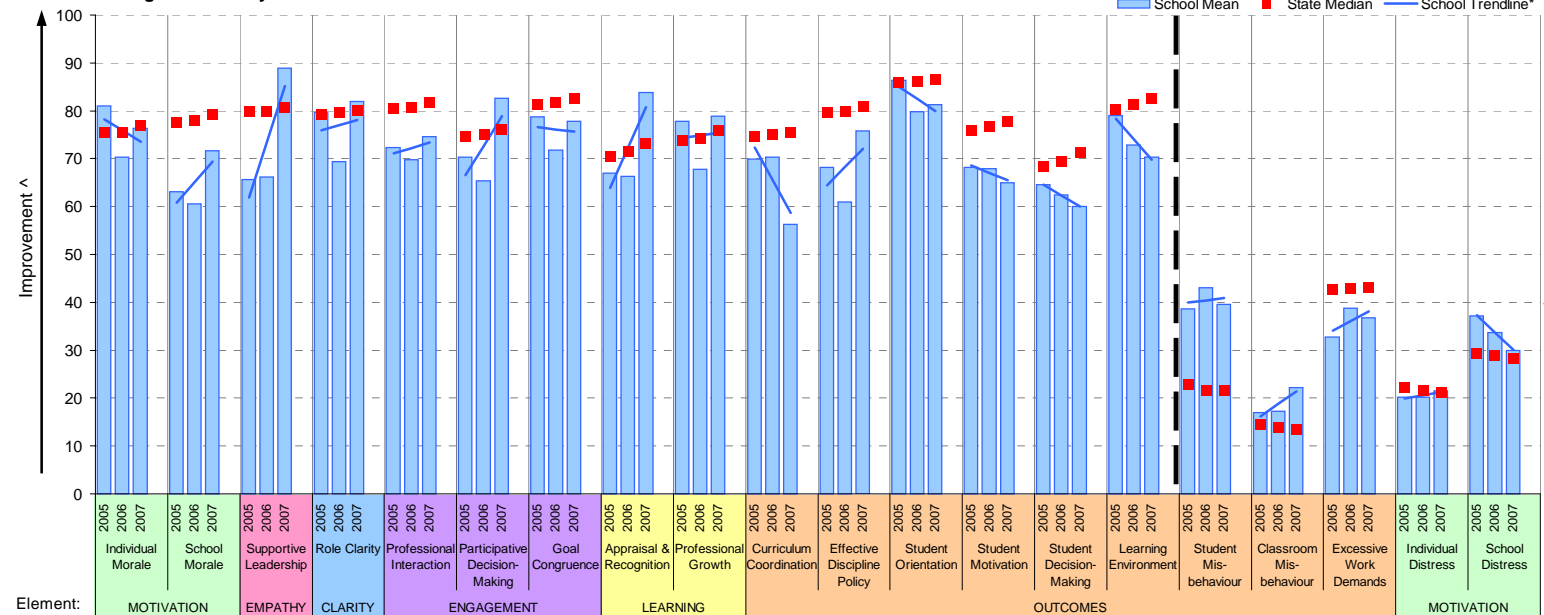


Year	No. of respondents	No. invited	Response Rate
2005	16	23	70%
2006	20	23	87%
2007	9	14	64%

School Mean as percentile (by school type)



School Mean against Primary State Mean



Notes: * The school trendline is being trialled. It is only plotted when there is data for each calendar year.

** If there were 6 or less respondents, table data is not shown for confidentiality reasons. If there were 3 or less respondents, graph data is not shown for confidentiality reasons.

^ The higher the school mean, the more positive the outcome for variables 1 to 15. The lower the school mean, the more positive the outcome for variables 16 to 20.

† The higher the school percentile, the more positive the outcome for all variables.

^^ Benchmarks are available for Primary, Secondary, Pri/Sec, Special & SDS schools.

Staff Sick Leave

School no: 4833

School name: Campmeadows Primary School

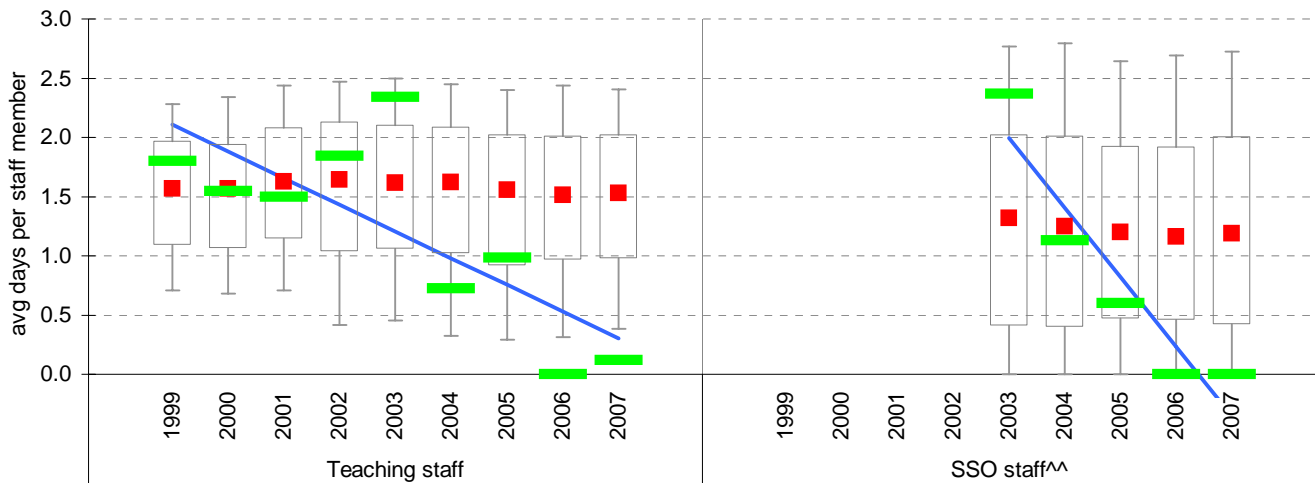
Explanation: The number of non-certificated and total sick leave days taken per staff member. A detailed explanation on how staff sick leave is calculated is provided in the Annual Reports Frequently Asked Questions page of the Standards website (<http://www.sofweb.vic.edu.au/standards/account/arepq.htm>).

Source of data: Human Resources Management System (HRMS)^.

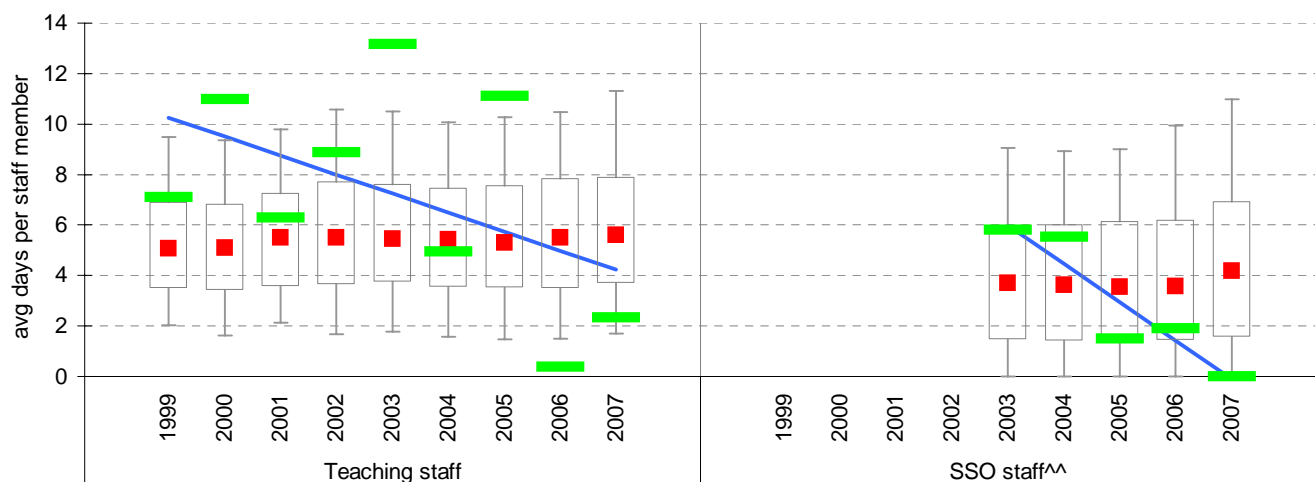
Staff Type	Non-Certificated sick leave days per staff member^									2007 State Median
	1999	2000	2001	2002	2003	2004	2005	2006	2007	
Teacher	1.80	1.54	1.50	1.84	2.34	0.72	0.99	0	0.12	1.53
SSO^^					2.37	1.13	0.60	0	0	1.19

Staff Type	Total sick leave days per staff member^									2007 State Median
	1999	2000	2001	2002	2003	2004	2005	2006	2007	
Teacher	7.11	10.98	6.28	8.89	13.16	4.93	11.11	0.38	2.33	5.61
SSO^^					5.80	5.53	1.48	1.90	0	4.20

NON-CERTIFICATED sick leave



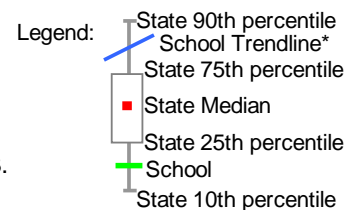
TOTAL sick leave



Note: * The school trendline is being trialled. It is only plotted when there is data for each calendar year.

^ There may be some discrepancy between the results from CASES & those from HRMS. The latter are considered to be more accurate.

^^ Data for SSO (School Services Officer) staff is only available from 2003.



Teaching Staff Retention

School no: 4833

School name: Campmeadows Primary School

Explanation: The retention rate of teaching staff is determined by matching staff payroll records for the last pay in June of one year (Year A), to the last pay in June of the following year (Year B).

Source of data: Human Resources Management System (HRMS).

Teaching Staff*

Year A	Year B	Number of Teaching Staff in Year A	Number of Teaching Staff retained in Year B	Teaching Staff Retention Rate	Statewide Average
2005	2006	12	11	92%	87%
2006	2007	12	9	75%	86%

Of the 12 teaching service staff at June 2005 (including those on leave without pay), 11 or 92% were still at the school at June 2006. This figure across all Government schools was 87%.

Of the 12 teaching service staff at June 2006 (including those on leave without pay), 9 or 75% were still at the school at June 2007. This figure across all Government schools was 86%.

Ongoing Teaching Staff*^

Year A	Year B	Number of Ongoing Teaching Staff in Year A	Number of Ongoing Teaching Staff retained in Year B	Ongoing Teaching Staff Retention Rate	Statewide Average
2005	2006	11	11	100%	91%
2006	2007	11	8	73%	90%

Of the 11 ongoing teaching service staff at June 2005 (including those on leave without pay), 11 or 100% were still at the school at June 2006. This figure across all Government schools was 91%.

Of the 11 ongoing teaching service staff at June 2006 (including those on leave without pay), 8 or 73% were still at the school at June 2007. This figure across all Government schools was 90%.

Notes: * Teaching staff includes Principal class, Teacher class and Instructor class. Teaching staff employed as visiting teachers, guidance officers, curriculum consultants, etc. are excluded as they are not charged to a particular school.

^ Not including fixed term staff, except for where staff had changed from ongoing in Year A to fixed term in Year B.

Bank Balances

School no: 4833

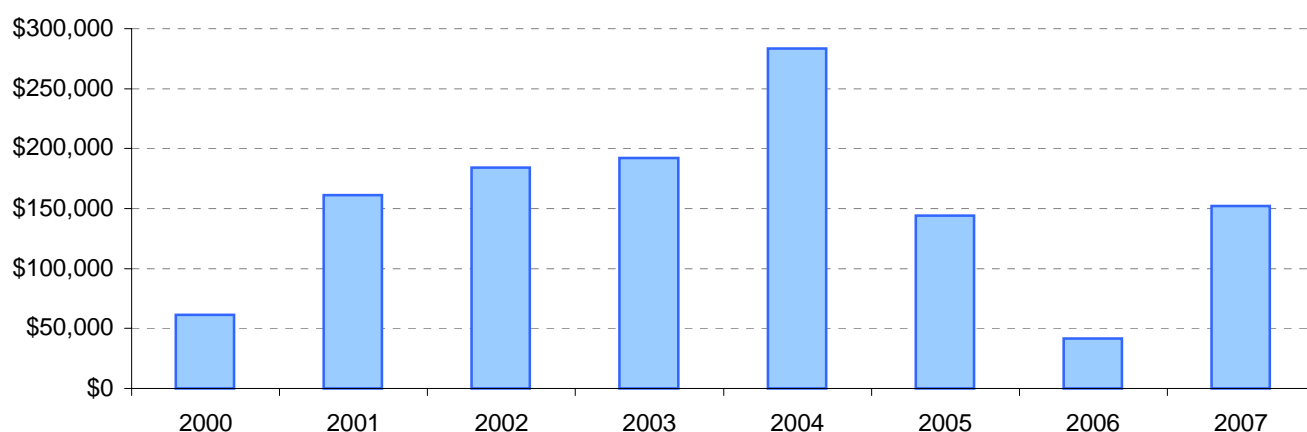
School name: Campmeadows Primary School

Explanation: Account balance figures include official and investment accounts, and are calculated by taking the opening balance at 1st January plus the total receipts at 31st December less total payments at 31st December.

Account Balances (Official plus Investment Accounts)

2000	\$61,535	2004	\$283,445
2001	\$160,991	2005	\$143,926
2002	\$184,288	2006	\$41,880
2003	\$191,991	2007	\$152,297

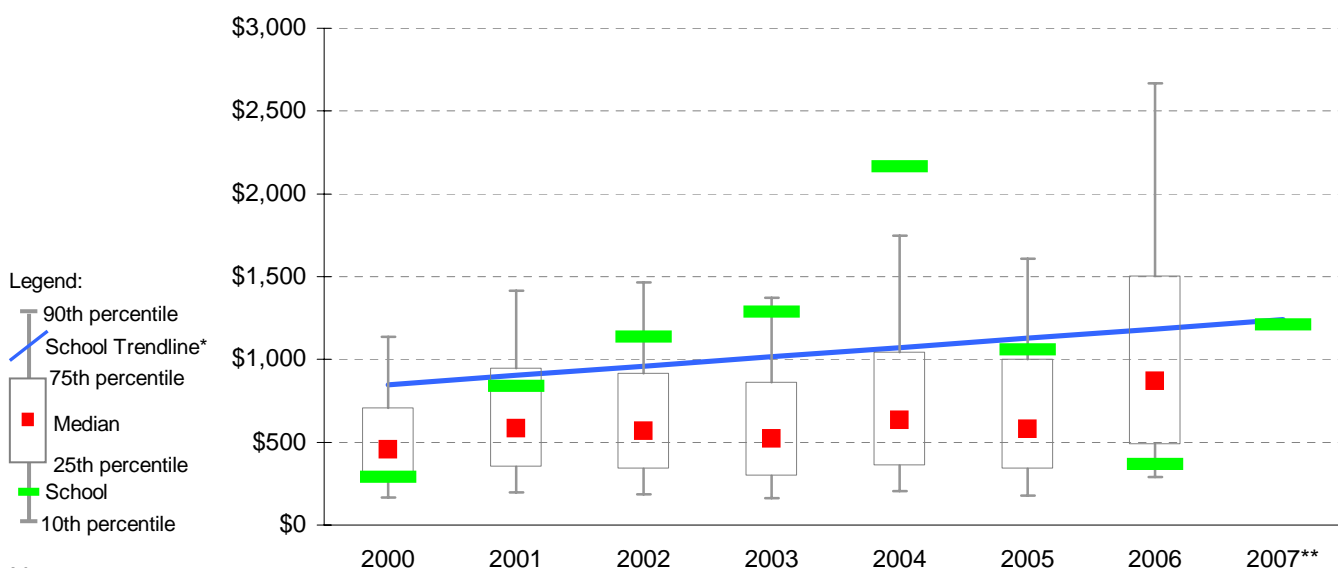
Account Balances



Account Balances (Official plus Investment Accounts) per student[†]

2000	\$289	2004	\$2,164
2001	\$838	2005	\$1,058
2002	\$1,138	2006	\$367
2003	\$1,289	2007	\$1,209

School account balances per student enrolled in August census plotted on state Primary benchmarks[^]



Notes:

* The school trendline is being trialled. It is only plotted when there is data for each calendar year.

** 2007 benchmarks will be calculated in August, when data from all schools has been submitted.

† The account balance per student has been calculated to enable some comparison to be made between schools.

^ Benchmarks for primary, secondary, pri/sec, SDS, special and language schools.